



GALVESTON ISLAND  
NEW YORK, NY  
IMO 9952878

# 2025

**GREAT LAKES DREDGE & DOCK COMPANY**





## SAFETY WITHOUT COMPROMISE

GLDD has been focused on eliminating man overboard (MOB) incidents for several years and we have implemented many best practices and safe work tools to successfully reduce man overboard events.

We have also invested in our fleet to further reduce exposure to potential incidents by taking delivery in late 2023 of the Cape Hatteras and the Cape Canaveral, two Damen 3013 Multi Cats built by Conrad Shipyard in Morgan City, LA. These vessels allow our pipe handling and connection work to take place securely on deck, greatly reducing the risk of man overboards. The results speak for themselves with our fifty percent reduction in 2024 man overboard incidents.

The MOB training and drills our crew members receive keep them readily available to assist in any type of incident involving workers or even non workers in the water. We are proud of our crews and team members for their continued commitment to safely work with each other and those around our operations and their willingness to help others when needed.

In early 2024, our company was awarded the American Waterways Operators American Waterways HERO Award, Recognizing Heroic Maritime Rescues, for the

quick thinking actions of Katie Weston, our East River Crew Boat Captain, and her lifesaving rescue on January 16, 2024. When Weston realized that the captain from the St. Louis River was in the water under the dock, her training and instincts kicked in as she calmly guided the captain over to the East River, deployed the Marcus man overboard rescue system, and used the boat hook to pull the captain out of the water unharmed.

Katie Weston is now forever added to our list of GLDD Heroes. Congratulations Katie, we are proud of you and thank you for jumping into action to save one of our own!

A special thanks to all our Team members who make all the above possible with their dedication, conscientious efforts, teamwork, and commitment to Safe Operations wherever we work.

Lasse Petterson  
President and Chief Executive Officer

David Johanson  
SVP, Project Acquisition and Operations

Christopher Gunsten  
SVP, Project Services and Fleet Engineering





Great Lakes Dredge & Dock Company, LLC (GLDD) is the largest provider of dredging services in the United States. GLDD owns and operates the largest and most diverse fleet in the U.S., and in its 134-year history, the Company has never failed to complete a project.

2024 was a banner year for our company, as we once again secured a record backlog over \$1.2 billion with a diverse portfolio of dredging projects with federal, state, and private contracts as well as continued success in booking work for our offshore wind market. We began dredging at two LNG facilities in Texas, including the largest dredging contract in our history for the Rio Grande LNG facility in Brownsville, Texas. We saw benefits of our investments in new equipment, with the hopper dredge, Galveston Island, successfully working multiple projects in 2024. Her sister ship the Amelia Island will be delivered in 2025. We expect that the Acadia, our rock installation vessel being built in Philadelphia, will also be delivered in 2025.

# ACADIA KEEL LAYING

On May 2, 2024, on a sunny day at the Philly Shipyard in Philadelphia, PA, we celebrated the ceremonial beginning of our subsea rock installation vessel's life, with the Acadia keel laying.



# GALVESTON ISLAND NAMING CEREMONY

In front of more than 200 GLDD employees and distinguished guests, on October 25, 2024, we celebrated the official naming ceremony of our newest Trailing Suction Hopper Dredge Galveston Island. The celebration was appropriately hosted on Pier 21 in Galveston, Texas where Galveston Island residents and visitors were excited to see this tremendous vessel docked at their pier.

After speeches and the presentation of Certificates of Recognition, Clara Petterson, wife of GLDD President and CEO Lasse Petterson, christened our new vessel to cheers and applause. Next were vessel tours hosted by the Galveston Island crew, followed by lunch.









# JANUARY

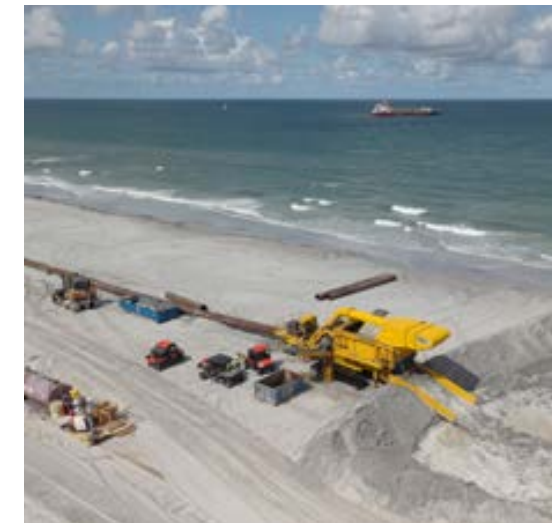
# 2025



| SUNDAY | MONDAY                                      | TUESDAY | WEDNESDAY                                   | THURSDAY                  | FRIDAY | SATURDAY |
|--------|---------------------------------------------|---------|---------------------------------------------|---------------------------|--------|----------|
| 29     | 30                                          | 31      | 1<br><i>New Year's Day<br/>Kwanzaa Ends</i> | 2<br><i>Hanukkah Ends</i> | 3      | 4        |
| 5      | 6                                           | 7       | 8                                           | 9                         | 10     | 11       |
| 12     | 13                                          | 14      | 15                                          | 16                        | 17     | 18       |
| 19     | 20<br><i>Martin Luther<br/>King Jr. Day</i> | 21      | 22                                          | 23                        | 24     | 25       |
| 26     | 27                                          | 28      | 29                                          | 30                        | 31     | 1        |

**ABOVE:** Trailing Suction Hopper Dredges Galveston Island, Ellis Island, and Liberty Island working on the Sabine-Neches Waterway Channel Improvement Project in Texas deepening the channel to accommodate larger vessels, reduce transportation costs, enhance channel efficiency, and improve safety for local port stakeholders. The client on this project is the Sabine-Neches Navigation District.

| DECEMBER 2024 |    |    |    |    |    |    | FEBRUARY 2025 |    |    |    |    |    |    |
|---------------|----|----|----|----|----|----|---------------|----|----|----|----|----|----|
| S             | M  | T  | W  | T  | F  | S  | S             | M  | T  | W  | T  | F  | S  |
| 1             | 2  | 3  | 4  | 5  | 6  | 7  |               |    |    |    |    |    | 1  |
| 8             | 9  | 10 | 11 | 12 | 13 | 14 | 2             | 3  | 4  | 5  | 6  | 7  | 8  |
| 15            | 16 | 17 | 18 | 19 | 20 | 21 | 9             | 10 | 11 | 12 | 13 | 14 | 15 |
| 22            | 23 | 24 | 25 | 26 | 27 | 28 | 16            | 17 | 18 | 19 | 20 | 21 | 22 |
| 29            | 30 | 31 |    |    |    |    | 23            | 24 | 25 | 26 | 27 | 28 |    |



**INSET:** Beach fill works in Jacksonville, Florida for the Duval County Shore Protection Beach Renourishment Project. (Photo: Ed O'Dowd)



GREAT LAKES DREDGE & DOCK COMPANY, LLC

**DF** INCIDENT & INJURY-FREE



# FEBRUARY

# 2025



| SUNDAY | MONDAY                       | TUESDAY | WEDNESDAY | THURSDAY | FRIDAY                       | SATURDAY |
|--------|------------------------------|---------|-----------|----------|------------------------------|----------|
| 26     | 27                           | 28      | 29        | 30       | 31                           | 1        |
| 2      | 3                            | 4       | 5         | 6        | 7                            | 8        |
| 9      | 10                           | 11      | 12        | 13       | 14<br><i>Valentine's Day</i> | 15       |
| 16     | 17<br><i>Presidents' Day</i> | 18      | 19        | 20       | 21                           | 22       |
| 23     | 24                           | 25      | 26        | 27       | 28                           | 1        |

**ABOVE:** Cutter Suction Dredge Ohio performing deepening improvements to the Brownsville Ship Channel in South Texas. The work is being performed for NextDecade Corporation, in support of their Rio Grande LNG project. (Photo: Dredge Ohio Relief Captain Zack Price)

| JANUARY 2025 |    |    |    |    |    |    | MARCH 2025 |    |    |    |    |    |    |
|--------------|----|----|----|----|----|----|------------|----|----|----|----|----|----|
| S            | M  | T  | W  | T  | F  | S  | S          | M  | T  | W  | T  | F  | S  |
|              |    |    | 1  | 2  | 3  | 4  |            |    |    |    |    |    | 1  |
| 5            | 6  | 7  | 8  | 9  | 10 | 11 | 2          | 3  | 4  | 5  | 6  | 7  | 8  |
| 12           | 13 | 14 | 15 | 16 | 17 | 18 | 9          | 10 | 11 | 12 | 13 | 14 | 15 |
| 19           | 20 | 21 | 22 | 23 | 24 | 25 | 16         | 17 | 18 | 19 | 20 | 21 | 22 |
| 26           | 27 | 28 | 29 | 30 | 31 |    | 23         | 24 | 25 | 26 | 27 | 28 | 29 |
|              |    |    |    |    |    |    | 30         | 31 |    |    |    |    |    |



**INSET:** Colonel Rhett Blackmon, U.S. Army Corps of Engineers "in the seat" aboard the Cutter Suction Dredge Ohio.



GREAT LAKES DREDGE & DOCK COMPANY, LLC

**DF** INCIDENT & INJURY-FREE



# MARCH

# 2025



| SUNDAY                                  | MONDAY                         | TUESDAY | WEDNESDAY                 | THURSDAY                   | FRIDAY | SATURDAY |
|-----------------------------------------|--------------------------------|---------|---------------------------|----------------------------|--------|----------|
| 23                                      | 24                             | 25      | 26                        | 27                         | 28     | 1        |
| 2                                       | 3                              | 4       | 5<br><i>Ash Wednesday</i> | 6                          | 7      | 8        |
| 9<br><i>Daylight Saving Time Begins</i> | 10                             | 11      | 12                        | 13                         | 14     | 15       |
| 16                                      | 17<br><i>St. Patrick's Day</i> | 18      | 19                        | 20<br><i>Spring Begins</i> | 21     | 22       |
| 23                                      | 24                             | 25      | 26                        | 27                         | 28     | 29       |
| 30                                      | 31                             | 1       | 2                         | 3                          | 4      | 5        |

**ABOVE:** Gulf Shores Beach Restoration project in Alabama. Trailing Suction Hopper Dredges Dodge Island and Padre Island placed over two million cubic yards of sand along five segments of the shoreline from Laguna Key westward to the AL/FL State Line on Perdido Key, Alabama. The client for this project was City of Orange Beach, Gulf State Park, and the City of Gulf Shores.

| FEBRUARY 2025 |    |    |    |    |    |    | APRIL 2025 |    |    |    |    |    |    |
|---------------|----|----|----|----|----|----|------------|----|----|----|----|----|----|
| S             | M  | T  | W  | T  | F  | S  | S          | M  | T  | W  | T  | F  | S  |
|               |    |    |    |    |    | 1  |            |    | 1  | 2  | 3  | 4  | 5  |
| 2             | 3  | 4  | 5  | 6  | 7  | 8  | 6          | 7  | 8  | 9  | 10 | 11 | 12 |
| 9             | 10 | 11 | 12 | 13 | 14 | 15 | 13         | 14 | 15 | 16 | 17 | 18 | 19 |
| 16            | 17 | 18 | 19 | 20 | 21 | 22 | 20         | 21 | 22 | 23 | 24 | 25 | 26 |
| 23            | 24 | 25 | 26 | 27 | 28 |    | 27         | 28 | 29 | 30 |    |    |    |



**INSET:** Construction Safety Week with Hopper team members and Dodge Island crew working at Sabine-Neches Channel Deepening, Sabine, Texas.



GREAT LAKES DREDGE & DOCK COMPANY, LLC





# APRIL

# 2025



| SUNDAY                     | MONDAY | TUESDAY                | WEDNESDAY | THURSDAY | FRIDAY                   | SATURDAY                     |
|----------------------------|--------|------------------------|-----------|----------|--------------------------|------------------------------|
| 30                         | 31     | 1                      | 2         | 3        | 4                        | 5                            |
| 6                          | 7      | 8                      | 9         | 10       | 11                       | 12<br><i>Passover Begins</i> |
| 13<br><i>Palm Sunday</i>   | 14     | 15<br><i>Tax Day</i>   | 16        | 17       | 18<br><i>Good Friday</i> | 19                           |
| 20<br><i>Easter Sunday</i> | 21     | 22<br><i>Earth Day</i> | 23        | 24       | 25                       | 26                           |
| 27                         | 28     | 29                     | 30        | 1        | 2                        | 3                            |

**ABOVE:** GLDD's Multi Cat dredge support vessels, Cape Hatteras and Cape Canaveral, were awarded the prestigious 2024 Significant Boat of the Year title at the International WorkBoat Show. This award underscores the Company's commitment to safety, innovation, and operational excellence in the dredging and maritime sectors.

| MARCH 2025 |    |    |    |    |    |    | MAY 2025 |    |    |    |    |    |    |
|------------|----|----|----|----|----|----|----------|----|----|----|----|----|----|
| S          | M  | T  | W  | T  | F  | S  | S        | M  | T  | W  | T  | F  | S  |
|            |    |    |    |    |    | 1  |          |    |    |    | 1  | 2  | 3  |
| 2          | 3  | 4  | 5  | 6  | 7  | 8  | 4        | 5  | 6  | 7  | 8  | 9  | 10 |
| 9          | 10 | 11 | 12 | 13 | 14 | 15 | 11       | 12 | 13 | 14 | 15 | 16 | 17 |
| 16         | 17 | 18 | 19 | 20 | 21 | 22 | 18       | 19 | 20 | 21 | 22 | 23 | 24 |
| 23         | 24 | 25 | 26 | 27 | 28 | 29 | 25       | 26 | 27 | 28 | 29 | 30 | 31 |
| 30         | 31 |    |    |    |    |    |          |    |    |    |    |    |    |



**INSET:** GLDD was awarded the 2024 WEDA Safety Excellence Award in the large business Dredging Company Category. WEDA recognized our continued commitment made to safety with our outstanding safety record and the investment and use of the first two Multi Cats in the U.S. market to improve dredge pipeline safety.

Photo one, pictured left to right: Lasse Petterson, Chris Gunsten, David Johanson. Photo two, pictured third from left, David Johanson.



GREAT LAKES DREDGE & DOCK COMPANY, LLC







# MAY

# 2025



| SUNDAY                    | MONDAY                                                 | TUESDAY | WEDNESDAY | THURSDAY                           | FRIDAY                       | SATURDAY |
|---------------------------|--------------------------------------------------------|---------|-----------|------------------------------------|------------------------------|----------|
| 27                        | 28                                                     | 29      | 30        | 1                                  | 2                            | 3        |
| 4                         | 5<br><i>Cinco de Mayo</i><br><i>Safety Week Begins</i> | 6       | 7         | 8                                  | 9<br><i>Safety Week Ends</i> | 10       |
| 11<br><i>Mother's Day</i> | 12                                                     | 13      | 14        | 15                                 | 16                           | 17       |
| 18                        | 19                                                     | 20      | 21        | 22<br><i>National Maritime Day</i> | 23                           | 24       |
| 25                        | 26<br><i>Memorial Day</i>                              | 27      | 28        | 29                                 | 30                           | 31       |

**ABOVE:** Trailing Suction Hopper Dredge Ellis Island performing the Fire Island Inlet to Montauk Inlet Rehabilitation Project, Saltaire to Suffolk County, NY for the U.S. Army Corps of Engineers, New York District.

| APRIL 2025 |    |    |    |    |    |    | JUNE 2025 |    |    |    |    |    |    |   |   |   |   |
|------------|----|----|----|----|----|----|-----------|----|----|----|----|----|----|---|---|---|---|
| S          | M  | T  | W  | T  | F  | S  | S         | M  | T  | W  | T  | F  | S  |   |   |   |   |
|            |    |    | 1  | 2  | 3  | 4  | 5         |    |    |    | 1  | 2  | 3  | 4 | 5 | 6 | 7 |
| 6          | 7  | 8  | 9  | 10 | 11 | 12 | 8         | 9  | 10 | 11 | 12 | 13 | 14 |   |   |   |   |
| 13         | 14 | 15 | 16 | 17 | 18 | 19 | 15        | 16 | 17 | 18 | 19 | 20 | 21 |   |   |   |   |
| 20         | 21 | 22 | 23 | 24 | 25 | 26 | 22        | 23 | 24 | 25 | 26 | 27 | 28 |   |   |   |   |
| 27         | 28 | 29 | 30 |    |    |    | 29        | 30 |    |    |    |    |    |   |   |   |   |



**INSET:** GLDD was honored to have Elaine Chao, the 18th United States Secretary of Transportation, as a guest at the 2024 AOTOS awards honoring Augie Tellez, Vice President of Seafarers International Union. Elaine Chao is pictured here with GLDD's Richard Balzano (top) and Robert Worrell.



GREAT LAKES DREDGE & DOCK COMPANY, LLC

**DF** INCIDENT & INJURY-FREE



# JUNE

# 2025



| SUNDAY       | MONDAY | TUESDAY | WEDNESDAY | THURSDAY | FRIDAY        | SATURDAY |
|--------------|--------|---------|-----------|----------|---------------|----------|
| 1            | 2      | 3       | 4         | 5        | 6             | 7        |
| 8            | 9      | 10      | 11        | 12       | 13            | 14       |
| 15           | 16     | 17      | 18        | 19       | 20            | 21       |
| Father's Day |        |         |           |          | Summer Begins |          |
| 22           | 23     | 24      | 25        | 26       | 27            | 28       |
| 29           | 30     | 1       | 2         | 3        | 4             | 5        |

**ABOVE:** Cutter Suction Dredge Illinois performing hydraulic dredging and beach placement for the North Wildwood Emergency Beach Nourishment Dredging Project, City of North Wildwood, Cape May County, NJ for the New Jersey Department of Transportation (NJDOT). (Photo: NJDOT)

| MAY 2025 |    |    |    |    |    |    | JULY 2025 |    |    |    |    |    |    |
|----------|----|----|----|----|----|----|-----------|----|----|----|----|----|----|
| S        | M  | T  | W  | T  | F  | S  | S         | M  | T  | W  | T  | F  | S  |
|          |    |    |    | 1  | 2  | 3  |           |    | 1  | 2  | 3  | 4  | 5  |
| 4        | 5  | 6  | 7  | 8  | 9  | 10 | 6         | 7  | 8  | 9  | 10 | 11 | 12 |
| 11       | 12 | 13 | 14 | 15 | 16 | 17 | 13        | 14 | 15 | 16 | 17 | 18 | 19 |
| 18       | 19 | 20 | 21 | 22 | 23 | 24 | 20        | 21 | 22 | 23 | 24 | 25 | 26 |
| 25       | 26 | 27 | 28 | 29 | 30 | 31 | 27        | 28 | 29 | 30 | 31 |    |    |

Flag Day

Father's Day

Summer Begins



**INSET:** GLDD's Mark Reid shaking hands with North Wildwood Mayor Patrick Rosenello at North Wildwood beach, NJDOT Genevieve Clifton shown center.

New Jersey Governor Phil Murphy and GLDD's Mark Reid, shown center, along with GLDD Site Team and NJDOT management nearing the completion of the North Wildwood Emergency Beach Nourishment Dredging.



GREAT LAKES DREDGE & DOCK COMPANY, LLC

**DF** INCIDENT & INJURY-FREE



# JULY

# 2025



| SUNDAY | MONDAY | TUESDAY                | WEDNESDAY | THURSDAY | FRIDAY                       | SATURDAY |
|--------|--------|------------------------|-----------|----------|------------------------------|----------|
| 29     | 30     | 1<br><i>Canada Day</i> | 2         | 3        | 4<br><i>Independence Day</i> | 5        |
| 6      | 7      | 8                      | 9         | 10       | 11                           | 12       |
| 13     | 14     | 15                     | 16        | 17       | 18                           | 19       |
| 20     | 21     | 22                     | 23        | 24       | 25                           | 26       |
| 27     | 28     | 29                     | 30        | 31       | 1                            | 2        |

**ABOVE:** Mechanical Dredge 54 maintenance dredging of the St. Lucie, Florida entrance channel and impoundment basin for the U.S. Army Corps of Engineers, Jacksonville District.

| JUNE 2025 |    |    |    |    |    |    | AUGUST 2025 |    |    |    |    |    |    |
|-----------|----|----|----|----|----|----|-------------|----|----|----|----|----|----|
| S         | M  | T  | W  | T  | F  | S  | S           | M  | T  | W  | T  | F  | S  |
| 1         | 2  | 3  | 4  | 5  | 6  | 7  |             |    |    |    |    | 1  | 2  |
| 8         | 9  | 10 | 11 | 12 | 13 | 14 | 3           | 4  | 5  | 6  | 7  | 8  | 9  |
| 15        | 16 | 17 | 18 | 19 | 20 | 21 | 10          | 11 | 12 | 13 | 14 | 15 | 16 |
| 22        | 23 | 24 | 25 | 26 | 27 | 28 | 17          | 18 | 19 | 20 | 21 | 22 | 23 |
| 29        | 30 |    |    |    |    |    | 24          | 25 | 26 | 27 | 28 | 29 | 30 |
|           |    |    |    |    |    |    | 31          |    |    |    |    |    |    |



**INSET:** GLDD Project Engineer Denechia Binghak at the Society of Women Engineers (SWE) 2024 Conference in Chicago, Illinois.



GREAT LAKES DREDGE & DOCK COMPANY, LLC

**DF** INCIDENT & INJURY-FREE



# AUGUST

# 2025



| SUNDAY | MONDAY                           | TUESDAY | WEDNESDAY | THURSDAY | FRIDAY | SATURDAY |
|--------|----------------------------------|---------|-----------|----------|--------|----------|
| 27     | 28                               | 29      | 30        | 31       | 1      | 2        |
| 3      | 4<br><i>U.S. Coast Guard Day</i> | 5       | 6         | 7        | 8      | 9        |
| 10     | 11                               | 12      | 13        | 14       | 15     | 16       |
| 17     | 18                               | 19      | 20        | 21       | 22     | 23       |
| 24     | 25                               | 26      | 27        | 28       | 29     | 30       |
| 31     | 1                                | 2       | 3         | 4        | 5      | 6        |

**ABOVE:** The Ellis Island at the St. Augustine Shore Protection Project, Florida. This was a beach renourishment project to provide shore protection. The client on this project is the U.S. Army Corps of Engineers, Jacksonville District. (Photo: Ed O'Dowd)

| JULY 2025 |    |    |    |    |    |    | SEPTEMBER 2025 |    |    |    |    |    |    |   |
|-----------|----|----|----|----|----|----|----------------|----|----|----|----|----|----|---|
| S         | M  | T  | W  | T  | F  | S  | S              | M  | T  | W  | T  | F  | S  |   |
|           |    | 1  | 2  | 3  | 4  | 5  |                |    | 1  | 2  | 3  | 4  | 5  | 6 |
| 6         | 7  | 8  | 9  | 10 | 11 | 12 | 7              | 8  | 9  | 10 | 11 | 12 | 13 |   |
| 13        | 14 | 15 | 16 | 17 | 18 | 19 | 14             | 15 | 16 | 17 | 18 | 19 | 20 |   |
| 20        | 21 | 22 | 23 | 24 | 25 | 26 | 21             | 22 | 23 | 24 | 25 | 26 | 27 |   |
| 27        | 28 | 29 | 30 | 31 |    |    | 28             | 29 | 30 |    |    |    |    |   |



**INSET:** In August 2024, Representative John Rutherford of Florida's 5th District and member of the House of Representatives Committee on Appropriations along with Mr. Henry Dean Saint John's County Commissioner, COL Brandon Bowman District Commander, and James McRae Resident Engineer from the U.S. Army Corps of Engineers South Atlantic Division paid an at-sea visit to the Great Lakes Dredge & Dock Company Hopper Dredge Ellis Island.



GREAT LAKES DREDGE & DOCK COMPANY, LLC  
**DF** INCIDENT & INJURY-FREE





# SEPTEMBER

# 2025



| SUNDAY | MONDAY                                              | TUESDAY | WEDNESDAY                       | THURSDAY                        | FRIDAY | SATURDAY |
|--------|-----------------------------------------------------|---------|---------------------------------|---------------------------------|--------|----------|
| 31     | 1<br><i>Labor Day</i>                               | 2       | 3                               | 4                               | 5      | 6        |
| 7      | 8                                                   | 9       | 10                              | 11                              | 12     | 13       |
| 14     | 15                                                  | 16      | 17                              | 18                              | 19     | 20       |
| 21     | 22<br><i>Autumn Begins<br/>Rosh Hashanah Begins</i> | 23      | 24<br><i>Rosh Hashanah Ends</i> | 25<br><i>World Maritime Day</i> | 26     | 27       |
| 28     | 29                                                  | 30      | 1                               | 2                               | 3      | 4        |

**ABOVE:** Cutter Suction Dredge Sandpiper maintenance dredging McClellan-Kerr, Arkansas River Navigation System for the U.S. Army Corps of Engineers, Little Rock District. (Photo: James Woodell)

| AUGUST 2025 |    |    |    |    |    |    | OCTOBER 2025 |    |    |    |    |    |    |
|-------------|----|----|----|----|----|----|--------------|----|----|----|----|----|----|
| S           | M  | T  | W  | T  | F  | S  | S            | M  | T  | W  | T  | F  | S  |
|             |    |    |    |    | 1  | 2  |              |    |    | 1  | 2  | 3  | 4  |
| 3           | 4  | 5  | 6  | 7  | 8  | 9  | 5            | 6  | 7  | 8  | 9  | 10 | 11 |
| 10          | 11 | 12 | 13 | 14 | 15 | 16 | 12           | 13 | 14 | 15 | 16 | 17 | 18 |
| 17          | 18 | 19 | 20 | 21 | 22 | 23 | 19           | 20 | 21 | 22 | 23 | 24 | 25 |
| 24          | 25 | 26 | 27 | 28 | 29 | 30 | 26           | 27 | 28 | 29 | 30 | 31 |    |
| 31          |    |    |    |    |    |    |              |    |    |    |    |    |    |



**INSET:** Dredging the Carraízo reservoir, located in the Río Grande de Loíza, in Puerto Rico. (Photo: Lester Salinas)



GREAT LAKES DREDGE & DOCK COMPANY, LLC  
**DF** INCIDENT & INJURY-FREE



# OCTOBER

# 2025



| SUNDAY | MONDAY                                                    | TUESDAY | WEDNESDAY                     | THURSDAY                    | FRIDAY                 | SATURDAY |
|--------|-----------------------------------------------------------|---------|-------------------------------|-----------------------------|------------------------|----------|
| 28     | 29                                                        | 30      | 1<br><i>Yom Kippur Begins</i> | 2<br><i>Yom Kippur Ends</i> | 3                      | 4        |
| 5      | 6                                                         | 7       | 8                             | 9                           | 10                     | 11       |
| 12     | 13<br><i>Columbus Day<br/>Indigenous<br/>Peoples' Day</i> | 14      | 15                            | 16                          | 17                     | 18       |
| 19     | 20                                                        | 21      | 22                            | 23                          | 24                     | 25       |
| 26     | 27                                                        | 28      | 29                            | 30                          | 31<br><i>Halloween</i> | 1        |

**ABOVE:** Cutter Suction Dredge Ohio under the Corpus Christi Bridge. Corpus Christi Channel Improvement Project for the U.S. Army Corps of Engineers, Galveston District. (Photo: David Mills)

| SEPTEMBER 2025 |    |    |    |    |    |    | NOVEMBER 2025 |    |    |    |    |    |    |
|----------------|----|----|----|----|----|----|---------------|----|----|----|----|----|----|
| S              | M  | T  | W  | T  | F  | S  | S             | M  | T  | W  | T  | F  | S  |
|                | 1  | 2  | 3  | 4  | 5  | 6  |               |    |    |    |    |    | 1  |
| 7              | 8  | 9  | 10 | 11 | 12 | 13 | 2             | 3  | 4  | 5  | 6  | 7  | 8  |
| 14             | 15 | 16 | 17 | 18 | 19 | 20 | 9             | 10 | 11 | 12 | 13 | 14 | 15 |
| 21             | 22 | 23 | 24 | 25 | 26 | 27 | 16            | 17 | 18 | 19 | 20 | 21 | 22 |
| 28             | 29 | 30 |    |    |    |    | 23            | 24 | 25 | 26 | 27 | 28 | 29 |
|                |    |    |    |    |    |    | 30            |    |    |    |    |    |    |



**INSET:** U.S. Army Corps of Engineers visit to the Trailing Suction Hopper Dredge Padre Island in Galveston, Texas.

Pictured left to right: David Mills, Project Sponsor - GLDD, Eric Schourek, Chief of Staff - USACE Galveston District (USACE-SWG), Preston Chasteen, Chief of Staff - USACE Tulsa District (USACE-SWT), Alexander Penzi, Captain, Padre Island - GLDD, Shannon Sauter, Chief of Staff - USACE Little Rock District (USACE-SWL), Rebecca Belk, Project Engineer - USACE Galveston District (USACE-SWG), Sara Knoll, Operations Manager - USACE Galveston District (USACE-SWG).



GREAT LAKES DREDGE & DOCK COMPANY, LLC  
 INCIDENT & INJURY-FREE IMPROVEMENTS



# NOVEMBER

# 2025



| SUNDAY                                                   | MONDAY | TUESDAY                   | WEDNESDAY | THURSDAY                  | FRIDAY | SATURDAY                    |
|----------------------------------------------------------|--------|---------------------------|-----------|---------------------------|--------|-----------------------------|
| 26                                                       | 27     | 28                        | 29        | 30                        | 31     | 1<br><i>All Saints' Day</i> |
| 2<br><i>Daylight Saving Time Ends<br/>All Souls' Day</i> | 3      | 4                         | 5         | 6                         | 7      | 8                           |
| 9                                                        | 10     | 11<br><i>Veterans Day</i> | 12        | 13                        | 14     | 15                          |
| 16                                                       | 17     | 18                        | 19        | 20                        | 21     | 22                          |
| 23                                                       | 24     | 25                        | 26        | 27<br><i>Thanksgiving</i> | 28     | 29                          |
| 30                                                       | 1      | 2                         | 3         | 4                         | 5      | 6                           |

**ABOVE:** Mechanical Dredge 58 deepening Freeport Harbor, Texas for the Freeport Harbor Channel Improvement Project for the U.S. Army Corps of Engineers, Galveston District.

| OCTOBER 2025 |    |    |    |    |    |    | DECEMBER 2025 |    |    |    |    |    |    |
|--------------|----|----|----|----|----|----|---------------|----|----|----|----|----|----|
| S            | M  | T  | W  | T  | F  | S  | S             | M  | T  | W  | T  | F  | S  |
|              |    |    | 1  | 2  | 3  | 4  |               | 1  | 2  | 3  | 4  | 5  | 6  |
| 5            | 6  | 7  | 8  | 9  | 10 | 11 | 7             | 8  | 9  | 10 | 11 | 12 | 13 |
| 12           | 13 | 14 | 15 | 16 | 17 | 18 | 14            | 15 | 16 | 17 | 18 | 19 | 20 |
| 19           | 20 | 21 | 22 | 23 | 24 | 25 | 21            | 22 | 23 | 24 | 25 | 26 | 27 |
| 26           | 27 | 28 | 29 | 30 | 31 |    | 28            | 29 | 30 | 31 |    |    |    |



**INSET:** U.S. Army Corps of Engineers, Galveston District Leadership Development Program Level II participants visit to the Dredge 58 and the Freeport Harbor Channel Improvement Project.

Pictured left to right: Kenneth Darko-Kagya, Heath Coles, Heath Barham, Rowan McLaughlin, Elizabeth McCarty, Jasper Schaer, Karly Sias, Kevin Mannie, Jennifer Galindo, David Mackintosh, GLDD Quality Systems Engineer Sadli Benjadid. (Photo: Brandon Suire)



GREAT LAKES DREDGE & DOCK COMPANY, LLC

**DF** INCIDENT & INJURY-FREE



# DECEMBER

# 2025



| SUNDAY                  | MONDAY               | TUESDAY | WEDNESDAY             | THURSDAY             | FRIDAY                                     | SATURDAY |
|-------------------------|----------------------|---------|-----------------------|----------------------|--------------------------------------------|----------|
| 30                      | 1                    | 2       | 3                     | 4                    | 5                                          | 6        |
| 7                       | 8                    | 9       | 10                    | 11                   | 12                                         | 13       |
| <i>Pearl Harbor Day</i> |                      |         |                       |                      |                                            |          |
| 14                      | 15                   | 16      | 17                    | 18                   | 19                                         | 20       |
| <i>Hanukkah Begins</i>  |                      |         |                       |                      |                                            |          |
| 21                      | 22                   | 23      | 24                    | 25                   | 26                                         | 27       |
| <i>Winter Begins</i>    | <i>Hanukkah Ends</i> |         | <i>Christmas Eve</i>  | <i>Christmas Day</i> | <i>Kwanzaa Begins</i><br><i>Boxing Day</i> |          |
| 28                      | 29                   | 30      | 31                    | 1                    | 2                                          | 3        |
|                         |                      |         | <i>New Year's Eve</i> |                      |                                            |          |

**ABOVE:** The first beach renourishment project for GLDD's Trailing Suction Hopper Dredge Galveston Island as part of the Duval County Shore Protection Beach Renourishment Project – a nine-mile beach renourishment in Duval County, Florida for the U.S. Army Corps of Engineers, Jacksonville District. (Photo: Ed O'Dowd)

| NOVEMBER 2025 |    |    |    |    |    |    | JANUARY 2026 |    |    |    |    |    |    |
|---------------|----|----|----|----|----|----|--------------|----|----|----|----|----|----|
| S             | M  | T  | W  | T  | F  | S  | S            | M  | T  | W  | T  | F  | S  |
|               |    |    |    |    |    | 1  |              |    |    |    | 1  | 2  | 3  |
| 2             | 3  | 4  | 5  | 6  | 7  | 8  | 4            | 5  | 6  | 7  | 8  | 9  | 10 |
| 9             | 10 | 11 | 12 | 13 | 14 | 15 | 11           | 12 | 13 | 14 | 15 | 16 | 17 |
| 16            | 17 | 18 | 19 | 20 | 21 | 22 | 18           | 19 | 20 | 21 | 22 | 23 | 24 |
| 23            | 24 | 25 | 26 | 27 | 28 | 29 | 25           | 26 | 27 | 28 | 29 | 30 | 31 |
| 30            |    |    |    |    |    |    |              |    |    |    |    |    |    |



**INSET:** During her first beach renourishment project, the Galveston Island crew was privileged to share our "new steel" with GLDD's former Vice President and Hopper Dredge Division Manager Bill Pagendarm. Mr. Pagendarm's leadership in the U.S. hopper dredge industry dates back to GLDD's initial entering into this market some 50 years ago.

Pictured left to right: Captain Anthony Magnoli, Bill Pagendarm, Hopper Fleet Senior Dredge Manager George "Bubba" Strawn.



GREAT LAKES DREDGE & DOCK COMPANY, LLC  
**DF** INCIDENT & INJURY-FREE





# JANUARY

# 2026



| SUNDAY | MONDAY                                      | TUESDAY | WEDNESDAY | THURSDAY                                    | FRIDAY | SATURDAY |
|--------|---------------------------------------------|---------|-----------|---------------------------------------------|--------|----------|
| 28     | 29                                          | 30      | 31        | 1<br><i>New Year's Day<br/>Kwanzaa Ends</i> | 2      | 3        |
| 4      | 5                                           | 6       | 7         | 8                                           | 9      | 10       |
| 11     | 12                                          | 13      | 14        | 15                                          | 16     | 17       |
| 18     | 19<br><i>Martin Luther<br/>King Jr. Day</i> | 20      | 21        | 22                                          | 23     | 24       |
| 25     | 26                                          | 27      | 28        | 29                                          | 30     | 31       |

**ABOVE:** The Great Egg Harbor Inlet Beach Renourishment Project, New Jersey for the U.S. Army Corps of Engineers, Philadelphia District.

| DECEMBER 2025 |    |    |    |    |    |    | FEBRUARY 2026 |    |    |    |    |    |    |
|---------------|----|----|----|----|----|----|---------------|----|----|----|----|----|----|
| S             | M  | T  | W  | T  | F  | S  | S             | M  | T  | W  | T  | F  | S  |
|               | 1  | 2  | 3  | 4  | 5  | 6  | 1             | 2  | 3  | 4  | 5  | 6  | 7  |
| 7             | 8  | 9  | 10 | 11 | 12 | 13 | 8             | 9  | 10 | 11 | 12 | 13 | 14 |
| 14            | 15 | 16 | 17 | 18 | 19 | 20 | 15            | 16 | 17 | 18 | 19 | 20 | 21 |
| 21            | 22 | 23 | 24 | 25 | 26 | 27 | 22            | 23 | 24 | 25 | 26 | 27 | 28 |
| 28            | 29 | 30 | 31 |    |    |    |               |    |    |    |    |    |    |



**INSET:** Great Egg Project Safe Today Challenge Champions Pedro Ubiera and Richard Stalling.



GREAT LAKES DREDGE & DOCK COMPANY, LLC

**DF** INCIDENT & INJURY-FREE

# CUTTER SUCTION DREDGES



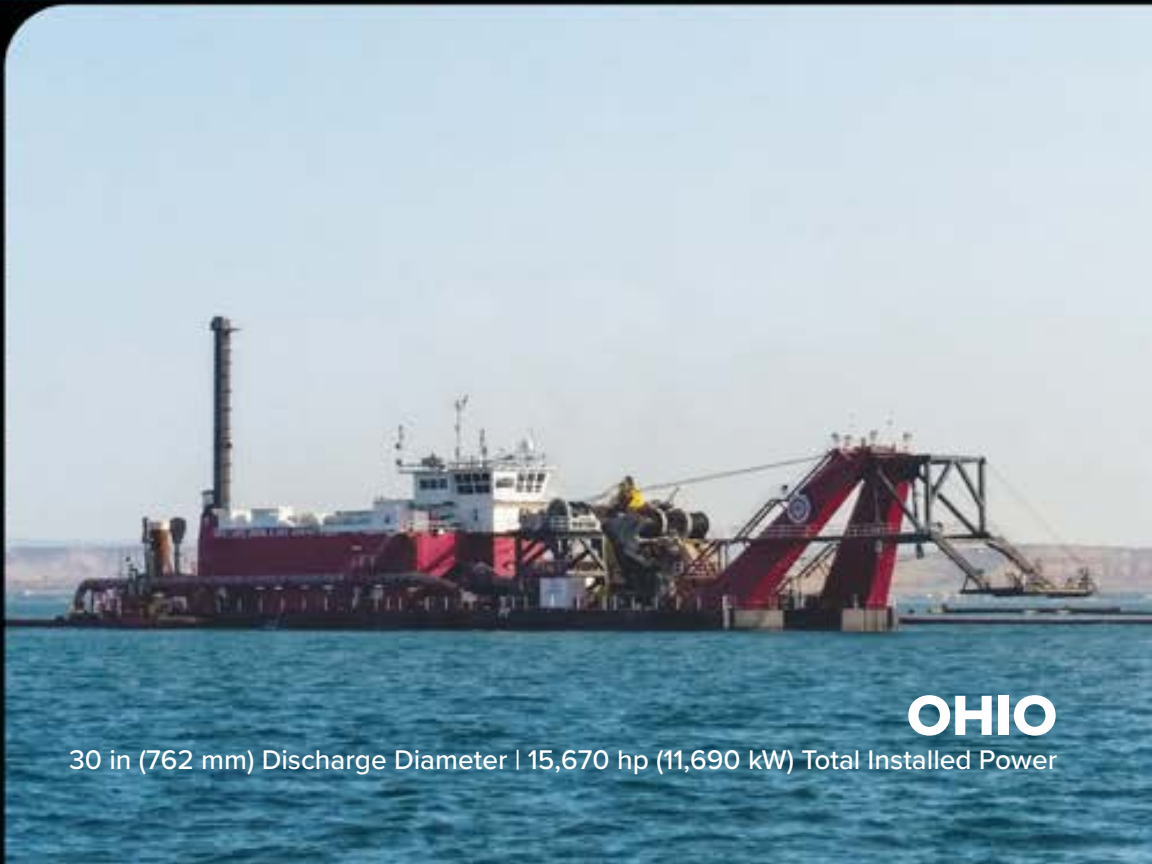
## TEXAS

30 in (762 mm) Discharge Diameter | 15,771 hp (11,765 kW) Total Installed Power



## CAROLINA

30 in (762 mm) Discharge Diameter | 15,325 hp (11,432 kW) Total Installed Power



## OHIO

30 in (762 mm) Discharge Diameter | 15,670 hp (11,690 kW) Total Installed Power



## ILLINOIS

30 in (762 mm) Discharge Diameter | 11,300 hp (8,430 kW) Total Installed Power



## ALASKA

30 in (762 mm) Discharge Diameter | 11,200 hp (8,355 kW) Total Installed Power

# TRAILING SUCTION HOPPER DREDGES



## ELLIS ISLAND

14,800 yd<sup>3</sup> (11,315 m<sup>3</sup>) Capacity | 28,625 hp (21,346 kW) Total Installed Power  
Bottom Dump/Pump-Out Disposal



## GALVESTON ISLAND

6,330 yd<sup>3</sup> (4,840 m<sup>3</sup>) Capacity | 16,366 hp (12,204 kW) Total Installed Power  
Bottom Dump/Pump-Out Disposal



## AMELIA ISLAND

6,330 yd<sup>3</sup> (4,840 m<sup>3</sup>) Capacity | 16,366 hp (12,204 kW) Total Installed Power  
Bottom Dump/Pump-Out Disposal (Delivery 2025)

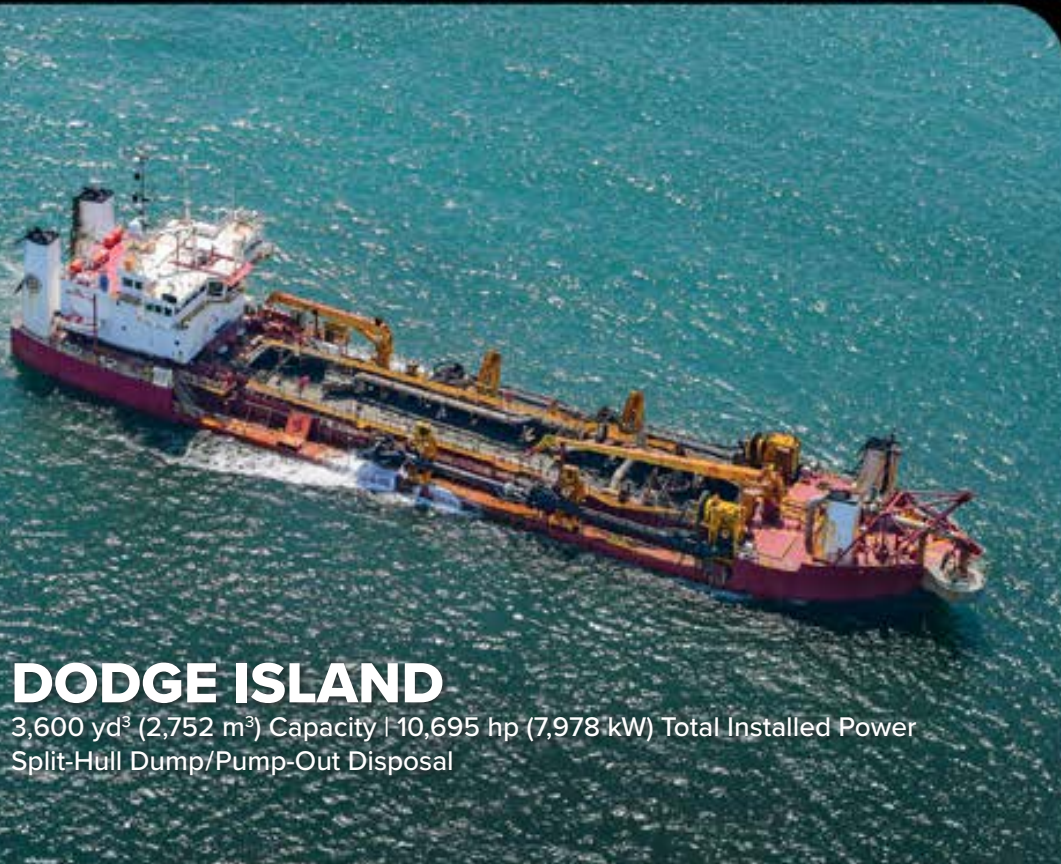
# LIBERTY ISLAND

6,540 yd<sup>3</sup> (5,000 m<sup>3</sup>) Capacity | 15,566 hp (11,612 kW) Total Installed Power  
Bottom Dump/Pump-Out Disposal



# DODGE ISLAND

3,600 yd<sup>3</sup> (2,752 m<sup>3</sup>) Capacity | 10,695 hp (7,978 kW) Total Installed Power  
Split-Hull Dump/Pump-Out Disposal



# PADRE ISLAND

3,600 yd<sup>3</sup> (2,752 m<sup>3</sup>) Capacity | 9,895 hp (7,382 kW) Total Installed Power  
Split-Hull Dump/Pump-Out Disposal



# MECHANICAL DREDGES



## NEW YORK

Up to 25 yd<sup>3</sup> (19 m<sup>3</sup>) Bucket Capacity | 3,818 hp (2,848 kW) Total Installed Power



## DREDGE No. 54

Up to 50 yd<sup>3</sup> (38 m<sup>3</sup>) Bucket Capacity | 2,340 hp (1,746 kW) Total Installed Power



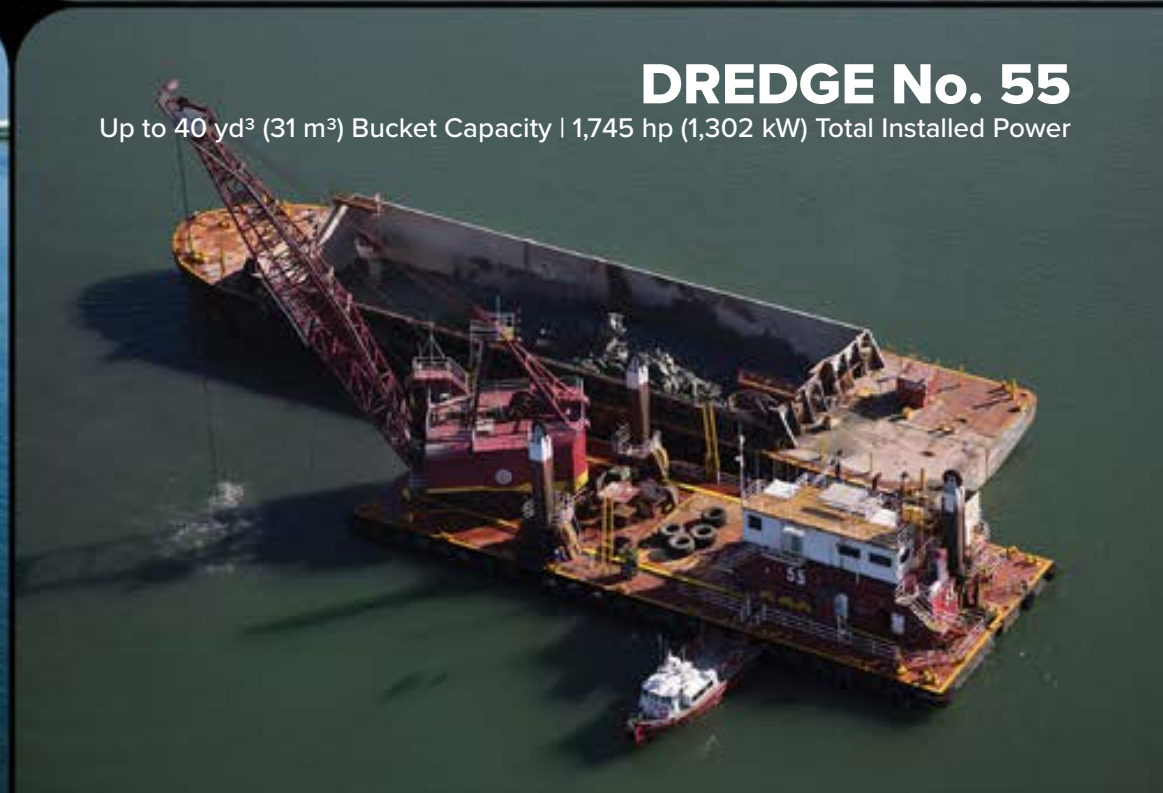
## DREDGE No. 58

Up to 50 yd<sup>3</sup> (38 m<sup>3</sup>) Bucket Capacity | 3,000 hp (2,237 kW) Total Installed Power



## DREDGE No. 55

Up to 40 yd<sup>3</sup> (31 m<sup>3</sup>) Bucket Capacity | 1,745 hp (1,302 kW) Total Installed Power



# SUPPORT EQUIPMENT



**MULTI CAT**  
Cape Hatteras



**MULTI CAT**  
Cape Canaveral



**TUG FLEET**  
Six Tugboats (McCormack Boys shown)  
800 hp (597 kW) to 3,000 hp (2,238 kW)



**SURVEY FLEET**  
Twenty-nine Boats (Calcasieu River shown)  
230 hp (172 kW) to 1,170 hp (873 kW)

# AUXILIARY FLEET



## DRILLBOAT APACHE

Three 90 ft (27 m) Towers | Hydraulic Percussion Drills; Emulsion or Stick Explosives



## MATERIAL BARGE FLEET

13 Material Transport Barges | 5,000 to 8,900 yd<sup>3</sup> (3,850 to 6,850 m<sup>3</sup>) Size Range



## UNLOADER No. 2

24 in (610 mm) Discharge Diameter | 6,800 hp (5,073 kW) Total Installed Power



## SPIDER BARGE 175

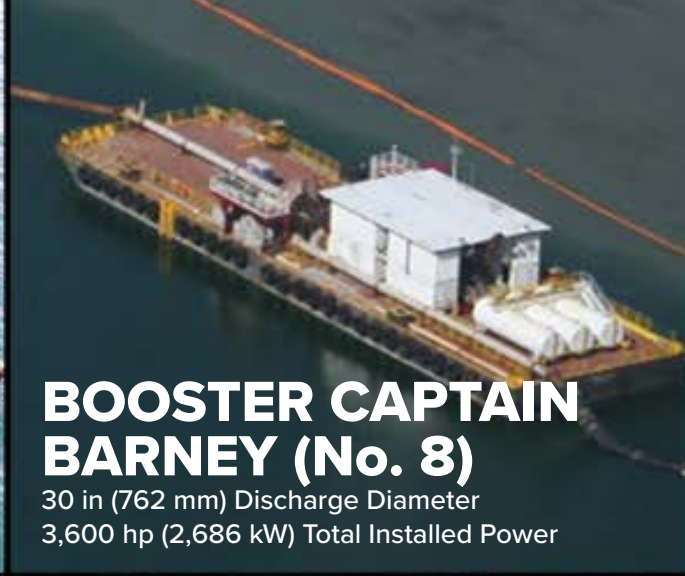
30 in (762 mm) Discharge Diameter | Three/Side Six-Arm Arrangement





## **BOOSTER JACK (No. 1)**

30 in (762 mm) Discharge Diameter  
3,600 hp (2,686 kW) Total Installed Power



## **BOOSTER CAPTAIN BARNEY (No. 8)**

30 in (762 mm) Discharge Diameter  
3,600 hp (2,686 kW) Total Installed Power



## **BOOSTER No. 9**

30 in (762 mm) Discharge Diameter  
3,600 hp (2,686 kW) Total Installed Power



## **BOOSTER JESSIE (No. 2)**

30 in (762 mm) Discharge Diameter  
7,200 hp (5,371 kW) Total Installed Power



## **BOOSTER BUSTER (No. 6)**

30 in (762 mm) Discharge Diameter  
14,400 hp (10,742 kW) Total Installed Power



## **BOOSTER ERIN (No. 5)**

30 in (762 mm) Discharge Diameter  
3,600 hp (2,686 kW) Total Installed Power



## **BOOSTER REGGIE (No. 4)**

30 in (762 mm) Discharge Diameter | 3,600 hp (2,686 kW) Total Installed Power



## **BOOSTER TEXAS JR. (No. 7)**

30 in (762 mm) Discharge Diameter  
3,900 hp (2,909 kW) Total Installed Power

# RIVERS & LAKES DREDGES



## LP

Discharge Diameter 22 in



## SANDPIPER

Discharge Diameter 20 in



# PEOPLE



# SUSTAINABILITY

GLDD practices effective environmental, safety, social, and governance processes in everything we do. Our business is focused on ensuring that our nation’s shorelines are protected and potential risks associated with storms and sea change are mitigated.

Our people seek and develop technical innovations so that our work can be completed efficiently and responsibly, and we are committed to executing all projects with robust environmental and safety standards.

To learn more about our sustainability initiatives, visit [gldd.com/sustainability](http://gldd.com/sustainability).

## 2025

## 2026

## 2027

|                                                                                                                                         |                                                                                                                                           |                                                                                                                                          |                                                                                                                                         |                                                                                                                                           |                                                                                                                                          |                                                                                                                                            |                                                                                                                                        |                                                                                                                                          |
|-----------------------------------------------------------------------------------------------------------------------------------------|-------------------------------------------------------------------------------------------------------------------------------------------|------------------------------------------------------------------------------------------------------------------------------------------|-----------------------------------------------------------------------------------------------------------------------------------------|-------------------------------------------------------------------------------------------------------------------------------------------|------------------------------------------------------------------------------------------------------------------------------------------|--------------------------------------------------------------------------------------------------------------------------------------------|----------------------------------------------------------------------------------------------------------------------------------------|------------------------------------------------------------------------------------------------------------------------------------------|
| <b>JANUARY 2025</b><br>S M T W T F S<br>1 2 3 4<br>5 6 7 8 9 10 11<br>12 13 14 15 16 17 18<br>19 20 21 22 23 24 25<br>26 27 28 29 30 31 | <b>FEBRUARY 2025</b><br>S M T W T F S<br>1<br>2 3 4 5 6 7 8<br>9 10 11 12 13 14 15<br>16 17 18 19 20 21 22<br>23 24 25 26 27 28           | <b>MARCH 2025</b><br>S M T W T F S<br>1<br>2 3 4 5 6 7 8<br>9 10 11 12 13 14 15<br>16 17 18 19 20 21 22<br>23 24 25 26 27 28 29<br>30 31 | <b>JANUARY 2026</b><br>S M T W T F S<br>1 2 3<br>4 5 6 7 8 9 10<br>11 12 13 14 15 16 17<br>18 19 20 21 22 23 24<br>25 26 27 28 29 30 31 | <b>FEBRUARY 2026</b><br>S M T W T F S<br>1 2 3 4 5 6 7<br>8 9 10 11 12 13 14<br>15 16 17 18 19 20 21<br>22 23 24 25 26 27 28<br>29 30 31  | <b>MARCH 2026</b><br>S M T W T F S<br>1 2 3 4 5 6 7<br>8 9 10 11 12 13 14<br>15 16 17 18 19 20 21<br>22 23 24 25 26 27 28<br>29 30 31    | <b>JANUARY 2027</b><br>S M T W T F S<br>1 2<br>3 4 5 6 7 8 9<br>10 11 12 13 14 15 16<br>17 18 19 20 21 22 23<br>24 25 26 27 28 29 30<br>31 | <b>FEBRUARY 2027</b><br>S M T W T F S<br>1 2 3 4 5 6<br>7 8 9 10 11 12 13<br>14 15 16 17 18 19 20<br>21 22 23 24 25 26 27<br>28        | <b>MARCH 2027</b><br>S M T W T F S<br>1 2 3 4 5 6<br>7 8 9 10 11 12 13<br>14 15 16 17 18 19 20<br>21 22 23 24 25 26 27<br>28 29 30 31    |
| <b>APRIL 2025</b><br>S M T W T F S<br>1 2 3 4 5<br>6 7 8 9 10 11 12<br>13 14 15 16 17 18 19<br>20 21 22 23 24 25 26<br>27 28 29 30      | <b>MAY 2025</b><br>S M T W T F S<br>1 2 3<br>4 5 6 7 8 9 10<br>11 12 13 14 15 16 17<br>18 19 20 21 22 23 24<br>25 26 27 28 29 30 31       | <b>JUNE 2025</b><br>S M T W T F S<br>1 2 3 4 5 6 7<br>8 9 10 11 12 13 14<br>15 16 17 18 19 20 21<br>22 23 24 25 26 27 28<br>29 30        | <b>APRIL 2026</b><br>S M T W T F S<br>1 2 3 4<br>5 6 7 8 9 10 11<br>12 13 14 15 16 17 18<br>19 20 21 22 23 24 25<br>26 27 28 29 30      | <b>MAY 2026</b><br>S M T W T F S<br>1 2<br>3 4 5 6 7 8 9<br>10 11 12 13 14 15 16<br>17 18 19 20 21 22 23<br>24 25 26 27 28 29 30<br>31    | <b>JUNE 2026</b><br>S M T W T F S<br>1 2 3 4 5 6<br>7 8 9 10 11 12 13<br>14 15 16 17 18 19 20<br>21 22 23 24 25 26 27<br>28 29 30        | <b>APRIL 2027</b><br>S M T W T F S<br>1 2 3<br>4 5 6 7 8 9 10<br>11 12 13 14 15 16 17<br>18 19 20 21 22 23 24<br>25 26 27 28 29 30         | <b>MAY 2027</b><br>S M T W T F S<br>1<br>2 3 4 5 6 7 8<br>9 10 11 12 13 14 15<br>16 17 18 19 20 21 22<br>23 24 25 26 27 28 29<br>30 31 | <b>JUNE 2027</b><br>S M T W T F S<br>1 2 3 4 5<br>6 7 8 9 10 11 12<br>13 14 15 16 17 18 19<br>20 21 22 23 24 25 26<br>27 28 29 30        |
| <b>JULY 2025</b><br>S M T W T F S<br>1 2 3 4 5<br>6 7 8 9 10 11 12<br>13 14 15 16 17 18 19<br>20 21 22 23 24 25 26<br>27 28 29 30 31    | <b>AUGUST 2025</b><br>S M T W T F S<br>1 2<br>3 4 5 6 7 8 9<br>10 11 12 13 14 15 16<br>17 18 19 20 21 22 23<br>24 25 26 27 28 29 30<br>31 | <b>SEPTEMBER 2025</b><br>S M T W T F S<br>1 2 3 4 5 6<br>7 8 9 10 11 12 13<br>14 15 16 17 18 19 20<br>21 22 23 24 25 26 27<br>28 29 30   | <b>JULY 2026</b><br>S M T W T F S<br>1 2 3 4<br>5 6 7 8 9 10 11<br>12 13 14 15 16 17 18<br>19 20 21 22 23 24 25<br>26 27 28 29 30 31    | <b>AUGUST 2026</b><br>S M T W T F S<br>1<br>2 3 4 5 6 7 8<br>9 10 11 12 13 14 15<br>16 17 18 19 20 21 22<br>23 24 25 26 27 28 29<br>30 31 | <b>SEPTEMBER 2026</b><br>S M T W T F S<br>1 2 3 4 5<br>6 7 8 9 10 11 12<br>13 14 15 16 17 18 19<br>20 21 22 23 24 25 26<br>27 28 29 30   | <b>JULY 2027</b><br>S M T W T F S<br>1 2 3<br>4 5 6 7 8 9 10<br>11 12 13 14 15 16 17<br>18 19 20 21 22 23 24<br>25 26 27 28 29 30 31       | <b>AUGUST 2027</b><br>S M T W T F S<br>1 2 3 4 5 6 7<br>8 9 10 11 12 13 14<br>15 16 17 18 19 20 21<br>22 23 24 25 26 27 28<br>29 30 31 | <b>SEPTEMBER 2027</b><br>S M T W T F S<br>1 2 3 4<br>5 6 7 8 9 10 11<br>12 13 14 15 16 17 18<br>19 20 21 22 23 24 25<br>26 27 28 29 30   |
| <b>OCTOBER 2025</b><br>S M T W T F S<br>1 2 3 4<br>5 6 7 8 9 10 11<br>12 13 14 15 16 17 18<br>19 20 21 22 23 24 25<br>26 27 28 29 30 31 | <b>NOVEMBER 2025</b><br>S M T W T F S<br>1<br>2 3 4 5 6 7 8<br>9 10 11 12 13 14 15<br>16 17 18 19 20 21 22<br>23 24 25 26 27 28 29<br>30  | <b>DECEMBER 2025</b><br>S M T W T F S<br>1 2 3 4 5 6<br>7 8 9 10 11 12 13<br>14 15 16 17 18 19 20<br>21 22 23 24 25 26 27<br>28 29 30 31 | <b>OCTOBER 2026</b><br>S M T W T F S<br>1 2 3<br>4 5 6 7 8 9 10<br>11 12 13 14 15 16 17<br>18 19 20 21 22 23 24<br>25 26 27 28 29 30 31 | <b>NOVEMBER 2026</b><br>S M T W T F S<br>1 2 3 4 5 6 7<br>8 9 10 11 12 13 14<br>15 16 17 18 19 20 21<br>22 23 24 25 26 27 28<br>29 30     | <b>DECEMBER 2026</b><br>S M T W T F S<br>1 2 3 4 5<br>6 7 8 9 10 11 12<br>13 14 15 16 17 18 19<br>20 21 22 23 24 25 26<br>27 28 29 30 31 | <b>OCTOBER 2027</b><br>S M T W T F S<br>1 2<br>3 4 5 6 7 8 9<br>10 11 12 13 14 15 16<br>17 18 19 20 21 22 23<br>24 25 26 27 28 29 30<br>31 | <b>NOVEMBER 2027</b><br>S M T W T F S<br>1 2 3 4 5 6<br>7 8 9 10 11 12 13<br>14 15 16 17 18 19 20<br>21 22 23 24 25 26 27<br>28 29 30  | <b>DECEMBER 2027</b><br>S M T W T F S<br>1 2 3 4<br>5 6 7 8 9 10 11<br>12 13 14 15 16 17 18<br>19 20 21 22 23 24 25<br>26 27 28 29 30 31 |



# ANATOMY OF A BEACH NOURISHMENT IN PROGRESS

An annotated overview of the beach nourishment at Sea Isle City, NJ as the Dredge Liberty Island pumps on the shore at 83rd Street.

July 21, 2020 at 4:00pm  
Photo: Emily Iseley



Scan to see the GLDD 2025 calendar online.



## OFFICES

### NORTHEAST

2747 Richmond Terrace | Staten Island, NY 10303  
718-981-2700 | 800-792-0085  
NortheastRegion@gldd.com

### SOUTHEAST

10151 Deerwood Park Blvd. Building 300, Suite 115  
Jacksonville, FL 32256 | 904-834-5234  
SoutheastRegion@gldd.com

### GULF

9811 Katy Freeway, Suite 1200 | Houston, TX 77024  
346-271-7701 | GulfRegion@gldd.com

### MIDDLE EAST

MJ Tower, Office No. 32, 1st Floor Building No. 870  
Road No. 3618, Block 436 Seef District,  
Manama Kingdom of Bahrain  
011.973.17.471.929 | MEinfo@gldd.com



## GREAT LAKES DREDGE & DOCK COMPANY, LLC

EST. 1890 • WWW.GLDD.COM • NASDAQ: GLDD

COMMITTED TO CREATING AN INCIDENT & INJURY FREE WORKING ENVIRONMENT (IIF).  
REGISTERED TO DO BUSINESS WORLDWIDE.  
AN EQUAL OPPORTUNITY EMPLOYER.

### HEADQUARTERS

9811 Katy Freeway, Suite 1200 | Houston, TX 77024  
346-359-1010 | info@gldd.com

### INVESTOR RELATIONS

Tina Baginskis | 630-574-3024

### BUSINESS OPERATIONS AND SUPPORT

1 Parkview Plaza, Suite 800  
Oakbrook Terrace, IL 60181  
630-574-3000 | info@gldd.com

### CAREERS

careers@gldd.com | www.gldd.com/careers

### COMPLIANCE LINE

1-888-579-1670 | gldd.mycompliancereport.com

### YARD LOCATIONS

|                   |                    |
|-------------------|--------------------|
| Staten Island, NY | Chickasaw, AL      |
| Norfolk, VA       | Cape Girardeau, MO |
| Morgan City, LA   | Little Rock, AR    |



# GREAT LAKES DREDGE & DOCK COMPANY

[www.gldd.com](http://www.gldd.com)



The Acadia, GLDD's new subsea rock installation vessel for the offshore wind market. (Delivery expected in 2025)

Cover Photo: Trailing Suction Hopper Dredge Galveston Island in Sabine-Neches Waterway.