



2023

GREAT LAKES DREDGE & DOCK COMPANY



Caminada Bull Gang, Offshore Port Fourchon, Louisiana.



Lasse Petterson hosted Mark Cooper with State of Louisiana and Johnny Koch of Pelican State Partners at Conrad Shipyard on board the new Trailing Suction Hopper Dredge Galveston Island.



Corpus Christi project tour aboard the dredge Carolina with USACE Brigadier General Christopher G. Beck, March 10, 2022.



Left to Right: Steve Fontana Regional Engineer, Trent Robertson Pipeline/Utility Resource Engineer, Groshaw Sellers Site Safety & Health Officer.



Changing out the Ellis Island drag head.



Dave Simonelli and team members of the Thimble Shoal East Deepening Project.



Jason Campbell accepting the Signal Mutual Industry Safety Leadership Award.



Dredge 58 Night Shift Crew, JAX C Project Safety Week 2022.



JAX C Project Dredge 58 Safety Week 2022.

SAFETY WITHOUT COMPROMISE

Our 2022 began and ended as in years past with safety at the core of all we do. We published the third edition of our safety rule book, SALT (Save a Life Today), the year before and in 2022 we conducted a series of rollout workshops to our team members. Changes and updates to the third edition were highlighted, discussed, and workshop participants were tested to prove competency. The third edition of SALT included updates to our Safety Commitment Statement, Fall Overboard Prevention, Energy Wheel, and other areas to heighten hazard identification and prevention.

We continuously work to improve our safety culture and resources and we are glad to report that both our leading and lagging indicators are trending in the right direction. Continuous improvement of our safety culture extended to our participation in Construction Safety Week—safety training and exercises, Construction Suicide Prevention Week—education and resources, and Construction Inclusion Week—through company-wide conversations leading toward alignment and improved diversity and inclusion in the construction industry.

Reducing our environmental impact will always be one of our key values. In 2022, Great Lakes Dredge and Dock invested \$4.5 million dollars to reduce emissions from the cutter suction dredge Carolina and the Company's largest booster station Buster, by installing selective catalytic reduction (SCR) systems. The SCRs are designed to treat the exhaust of the engines to reduce NOx

and particulate matter emissions. Retrofitting our equipment supports our goal of reducing our overall environmental impact as we strive to leave the areas we work in a better state than when we started. This aligns with our safety commitment to protect the environment by recognizing and mitigating environmental risks associated with our operations and our vessels.

We are always proud to be recognized for our safety culture and are pleased to have received the prestigious Signal Mutual Industry Safety Leadership Award, presented to us in January 2022, in recognition of outstanding safety performance for two consecutive years.

A special thanks to our team members who make all of the above possible with their dedication, conscientious efforts, teamwork, and commitment to safe operations wherever we work.


Lasse Petterson
President and Chief Executive Officer


David Johanson
SVP, Project Acquisition and Operations

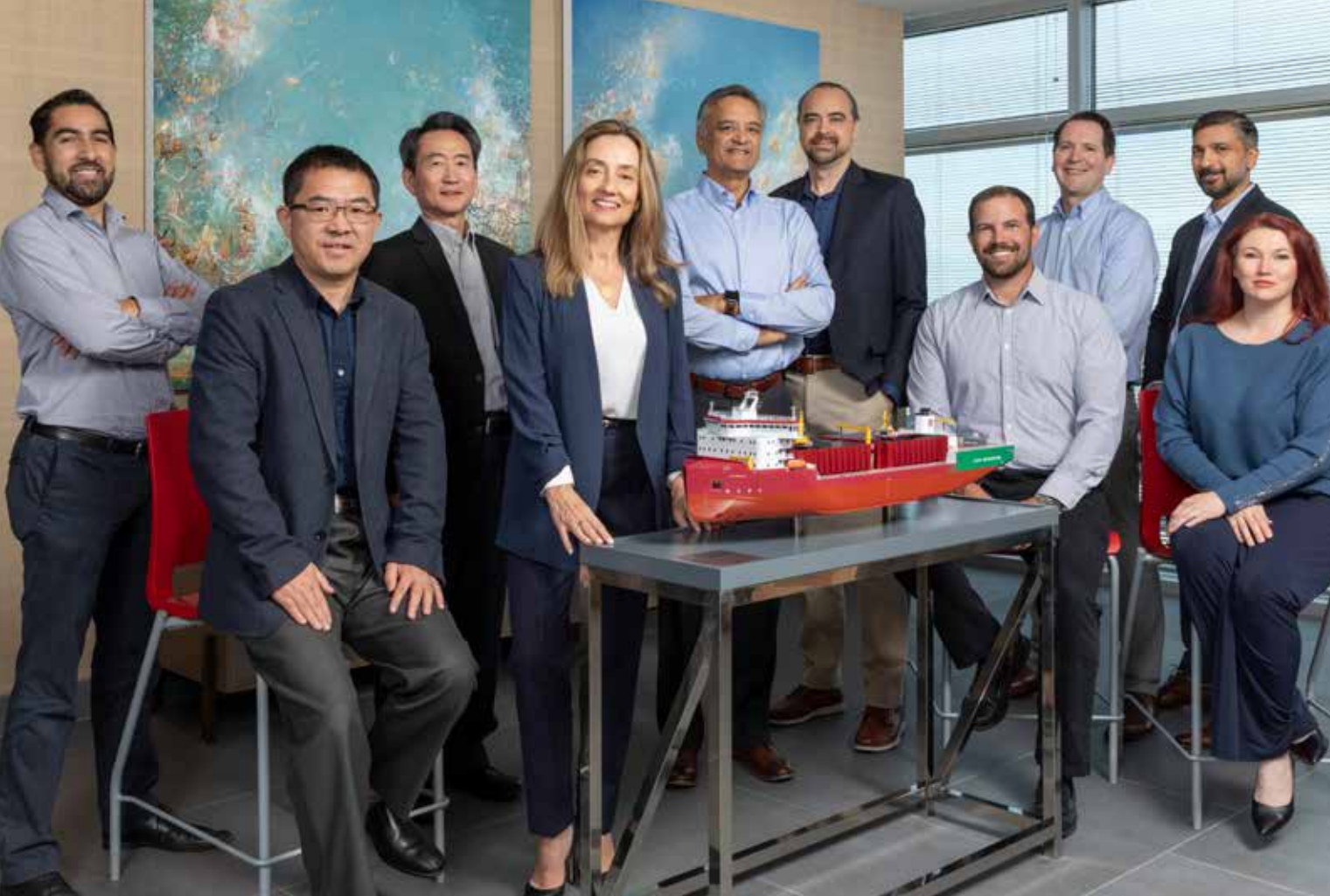

Christopher Gunsten
SVP, Project Services and Fleet Engineering



Great Lakes Dredge & Dock Company, LLC (GLDD) is the largest provider of dredging services in the United States and the only U.S. dredging service provider with significant international operations. GLDD owns and operates the largest and most diverse fleet in the U.S., and in its 133-year history, the Company has never failed to complete a marine project.

The year 2022 was an exciting year for our company. We announced a new collaboration with the College of Engineering at Texas A&M University to provide funding and technical support for what will become the Great Lakes Dredge & Dock Laboratory of Dredging and Coastal Studies. Our new build program is on schedule with the new hopper dredge, the Galveston Island, expected to be sea ready for operations in the first half of 2023 and her sister ship expected to be ready for operations in 2025. We welcomed more than 200 new team members and announced a new operations leadership team.

The Dredge Ellis Island is the largest hopper dredge in the United States market, with a carrying capacity of 15,000 cubic yards.



In May of 2022, GLDD was selected to perform the subsea rock installation work for the Empire Wind I and II wind farms in the East Coast of the United States. Empire Wind I and II are expected to provide over 2 Gigawatts (GW) of renewable energy to the State of New York.

GLDD will use the first Jones Act compliant subsea rock installation vessel, currently under construction at the Philly Shipyard in the U.S., to install rocks to protect and stabilize monopile foundations, electrical substructures, and export cables at the offshore wind site.

On November 17, 2022, at the Ventus Gala in Washington, DC, GLDD received the prestigious Supply Chain Advancement Award for building the first U.S. flagged rock installation vessel and developing the U.S. supply chains required for building the vessel, procuring, transporting, and installing scour protection in the U.S.

“The Ventus Awards are the Business Network for Offshore Wind’s highest level of professional recognition, celebrating the trailblazing people, companies, organizations, and work worldwide ushering in the global adoption of offshore wind energy. This award shines a spotlight on those who are making a difference in the world through their talent, drive, and commitment to advancing the offshore wind industry and improving the environment.”

Pictured above: Houston Offshore Wind team members and the scale model of GLDD’s subsea rock installation vessel for the offshore wind market under construction at Philly Shipyard, Philadelphia, PA. Also shown, the Ventus Award trophy, designed to represent wind and water.



DECEMBER

2022

SUNDAY	MONDAY	TUESDAY	WEDNESDAY	THURSDAY	FRIDAY	SATURDAY
27	28	29	30	1	2	3
4	5	6	7 <i>Pearl Harbor Day</i>	8	9	10
11	12	13	14	15	16	17
18 <i>Hanukkah Begins</i>	19	20	21 <i>Winter Begins</i>	22	23	24 <i>Christmas Eve</i>
25 <i>Christmas Day</i>	26 <i>Kwanzaa Begins Boxing Day Hanukkah Ends</i>	27	28	29	30	31

Main: The Fire Island Inlet to Montauk Point Beach Project included dredging Fire Island Inlet by GLDD's Cutter Suction Dredge Illinois along with beneficial use of the dredged material at Gilgo Beach and Robert Moses State Park. Project benefits include improved inlet and nearby U.S. Coast Guard facility navigation as well as protecting infrastructure along this important coastline.

Inset: Fire Island Project Site Engineers conducting hydrographic surveys with battery powered remote surface vessel.

NOVEMBER 2022							JANUARY 2023						
S	M	T	W	T	F	S	S	M	T	W	T	F	S
		1	2	3	4	5	1	2	3	4	5	6	7
6	7	8	9	10	11	12	8	9	10	11	12	13	14
13	14	15	16	17	18	19	15	16	17	18	19	20	21
20	21	22	23	24	25	26	22	23	24	25	26	27	28
27	28	29	30				29	30	31				



GREAT LAKES DREDGE & DOCK COMPANY, LLC

IF INCIDENT & INJURY-FREE



JANUARY

2023

SUNDAY

MONDAY

TUESDAY

WEDNESDAY

THURSDAY

FRIDAY

SATURDAY

1

New Year's Day
Kwanzaa Ends

2

3

4

5

6

7

Main: Trailing Suction Hopper Dredge Dodge Island performing maintenance dredging in the Delaware Bay for Corps of Engineers Philadelphia and New Orleans Districts.

Inset: Southeast Region project team members of the Nags Head and Avon Buxton Project's visited the North Carolina Aquarium at Roanoke Island. Team members learned about the aquarium's efforts to work with and rehabilitate turtles while sharing GLDD's endeavors to minimize impacts while completing critical beach nourishment projects.

8

9

10

11

12

13

14

DECEMBER 2022

FEBRUARY 2023

S	M	T	W	T	F	S	S	M	T	W	T	F	S
						1	2	3					
4	5	6	7	8	9	10	5	6	7	8	9	10	11
11	12	13	14	15	16	17	12	13	14	15	16	17	18
18	19	20	21	22	23	24	19	20	21	22	23	24	25
25	26	27	28	29	30	31	26	27	28				

15

16

17

18

19

20

21

Martin Luther King Jr. Day

22

23

24

25

26

27

28



29

30

31

1

2

3

4



GREAT LAKES DREDGE & DOCK COMPANY, LLC

IF INCIDENT & INJURY-FREE



FEBRUARY

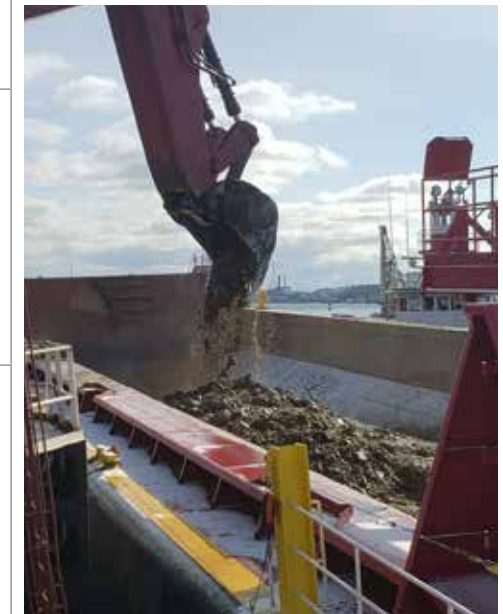
2023

SUNDAY	MONDAY	TUESDAY	WEDNESDAY	THURSDAY	FRIDAY	SATURDAY
29	30	31	1	2	3	4
5	6	7	8	9	10	11
12	13	14 Valentine's Day	15	16	17	18
19	20 Presidents Day	21	22 Ash Wednesday	23	24	25
26	27	28	1	2	3	4

Main: GLDD's Dredge New York in Boston Harbor, Massport Conley Container Terminal, Boston Harbor Deepening Project for the U.S. Army Corps of Engineers.

Inset: Blasted rock from Boston Harbor Deepening.

JANUARY 2023							MARCH 2023						
S	M	T	W	T	F	S	S	M	T	W	T	F	S
1	2	3	4	5	6	7				1	2	3	4
8	9	10	11	12	13	14	5	6	7	8	9	10	11
15	16	17	18	19	20	21	12	13	14	15	16	17	18
22	23	24	25	26	27	28	19	20	21	22	23	24	25
29	30	31					26	27	28	29	30	31	



GREAT LAKES DREDGE & DOCK COMPANY, LLC

IF INCIDENT & INJURY-FREE



MARCH

2023

SUNDAY	MONDAY	TUESDAY	WEDNESDAY	THURSDAY	FRIDAY	SATURDAY
26	27	28	1	2	3	4
5	6	7	8	9	10	11
12	13	14	15	16	17	18
19	20	21	22	23	24	25
26	27	28	29	30	31	1

Main: Cutter Suction Dredge Iowa dredging McKellar Lake navigation channel for the U.S. Army Corps of Engineers, Memphis District.

Inset: GLDD's Dave Johanson together with team members from the Gulf Region and Houston Headquarters lend a hand at the Houston Food Bank.

FEBRUARY 2023

S	M	T	W	T	F	S
			1	2	3	4
5	6	7	8	9	10	11
12	13	14	15	16	17	18
19	20	21	22	23	24	25
26	27	28				

APRIL 2023

S	M	T	W	T	F	S
						1
2	3	4	5	6	7	8
9	10	11	12	13	14	15
16	17	18	19	20	21	22
23	24	25	26	27	28	29
30						

Daylight Saving Time Begins

St. Patrick's Day

Spring Begins



GREAT LAKES DREDGE & DOCK COMPANY, LLC

IF INCIDENT & INJURY-FREE



APRIL

2023

SUNDAY	MONDAY	TUESDAY	WEDNESDAY	THURSDAY	FRIDAY	SATURDAY
26	27	28	29	30	31	1
2	3	4	5	6	7	8
Palm Sunday			Passover Begins		Good Friday	
9	10	11	12	13	14	15
Easter				Passover Ends		
16	17	18	19	20	21	22
		Tax Day				Earth Day
23	24	25	26	27	28	29
30	1	2	3	4	5	6

Main: Clamshell Dredge 58 deepening the Wando Terminal in Charleston, South Carolina for the U.S. Army Corps of Engineers.

Inset: Scow change at Wando Turning Basin in Charleston, South Carolina.

MARCH 2023							MAY 2023						
S	M	T	W	T	F	S	S	M	T	W	T	F	S
			1	2	3	4		1	2	3	4	5	6
5	6	7	8	9	10	11	7	8	9	10	11	12	13
12	13	14	15	16	17	18	14	15	16	17	18	19	20
19	20	21	22	23	24	25	21	22	23	24	25	26	27
26	27	28	29	30	31		28	29	30	31			



GREAT LAKES DREDGE & DOCK COMPANY, LLC

IF INCIDENT & INJURY-FREE



MAY

2023

SUNDAY	MONDAY	TUESDAY	WEDNESDAY	THURSDAY	FRIDAY	SATURDAY
30	1 <i>Safety Week Begins</i>	2	3	4	5 <i>Cinco de Mayo Safety Week Ends</i>	6
7	8	9	10	11	12	13
14 <i>Mother's Day</i>	15	16	17	18	19	20
21	22 <i>National Maritime Day</i>	23	24	25	26	27
28	29 <i>Memorial Day</i>	30	31	1	2	3

Main: Cutter Suction Dredge Carolina deepening Houston Ship Channel for the Port of Houston.

Inset: Dredge 54 working in Houston Ship Channel on Project 11.

APRIL 2023							JUNE 2023						
S	M	T	W	T	F	S	S	M	T	W	T	F	S
						1					1	2	3
2	3	4	5	6	7	8	4	5	6	7	8	9	10
9	10	11	12	13	14	15	11	12	13	14	15	16	17
16	17	18	19	20	21	22	18	19	20	21	22	23	24
23	24	25	26	27	28	29	25	26	27	28	29	30	
30													



GREAT LAKES DREDGE & DOCK COMPANY, LLC

IF INCIDENT & INJURY-FREE



JUNE

2023

SUNDAY

MONDAY

TUESDAY

WEDNESDAY

THURSDAY

FRIDAY

SATURDAY

28

29

30

31

1

2

3

Main: Birdseye view from the Dredge New York towing tug toward Dredge 55 operations for the Portsmouth Harbor, New Hampshire Deepening Project for the U.S. Army Corps of Engineers, New England District.

Inset: The Drillboat Apache in Portsmouth Harbor, New Hampshire.

MAY 2023

S	M	T	W	T	F	S
	1	2	3	4	5	6
7	8	9	10	11	12	13
14	15	16	17	18	19	20
21	22	23	24	25	26	27
28	29	30	31			

JULY 2023

S	M	T	W	T	F	S
						1
2	3	4	5	6	7	8
9	10	11	12	13	14	15
16	17	18	19	20	21	22
23	24	25	26	27	28	29
30	31					

4

5

6

7

8

9

10

11

12

13

14

15

16

17

Flag Day

18

19

20

21

22

23

24

Father's Day

Summer Begins

25

26

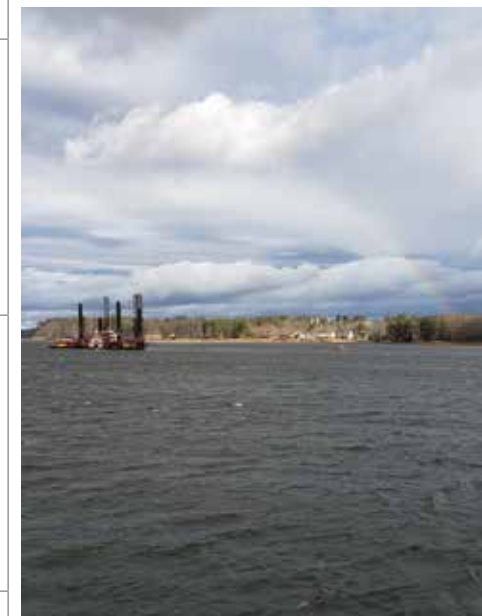
27

28

29

30

1



GREAT LAKES DREDGE & DOCK COMPANY, LLC

IF INCIDENT & INJURY-FREE



JULY

2023

SUNDAY	MONDAY	TUESDAY	WEDNESDAY	THURSDAY	FRIDAY	SATURDAY
25	26	27	28	29	30	1 Canada Day
2	3	4 Independence Day	5	6	7	8
9	10	11	12	13	14	15
16	17	18	19	20	21	22
23	24	25	26	27	28	29
30	31	1	2	3	4	5

Main: Constructing a coastal storm risk management beach in St. Lucie County South Hutchinson Island, Florida for the U.S. Army Corps of Engineers.
(Photo: Ed O'Dowd)

Inset: Trailing Suction Hopper Dredge Padre Island offshore Hutchinson Island, Florida.
(Photo: Ed O'Dowd)

JUNE 2023							AUGUST 2023						
S	M	T	W	T	F	S	S	M	T	W	T	F	S
				1	2	3			1	2	3	4	5
4	5	6	7	8	9	10	6	7	8	9	10	11	12
11	12	13	14	15	16	17	13	14	15	16	17	18	19
18	19	20	21	22	23	24	20	21	22	23	24	25	26
25	26	27	28	29	30		27	28	29	30	31		



GREAT LAKES DREDGE & DOCK COMPANY, LLC

IF INCIDENT & INJURY-FREE



AUGUST

2023

SUNDAY	MONDAY	TUESDAY	WEDNESDAY	THURSDAY	FRIDAY	SATURDAY
30	31	1	2	3	4 U.S. Coast Guard Day	5
6	7	8	9	10	11	12
13	14	15	16	17	18	19
20	21	22	23	24	25	26
27	28	29	30	31	1	2

Main: Cutter Suction Dredge Texas digging in borrow area and pumping to Kure Beach for the U.S. Army Corps of Engineers, Wilmington District. In the background is Carolina Beach, recently nourished, and the Port of Wilmington.

Inset: GLDD Construction Safety Week exercises at Kure Beach.

JULY 2023							SEPTEMBER 2023						
S	M	T	W	T	F	S	S	M	T	W	T	F	S
						1							1 2
2	3	4	5	6	7	8	3	4	5	6	7	8	9
9	10	11	12	13	14	15	10	11	12	13	14	15	16
16	17	18	19	20	21	22	17	18	19	20	21	22	23
23	24	25	26	27	28	29	24	25	26	27	28	29	30
30	31												



GREAT LAKES DREDGE & DOCK COMPANY, LLC

IF INCIDENT & INJURY-FREE



SEPTEMBER

2023

SUNDAY

MONDAY

TUESDAY

WEDNESDAY

THURSDAY

FRIDAY

SATURDAY

27

28

29

30

31

1

2

Main: Cutter Suction Dredge Ohio deepening Corpus Christi Upper Bay Reach Channel for U.S. Army Corps of Engineers, Galveston District.

Inset: Corpus Christi Deepening Project site team.

AUGUST 2023

OCTOBER 2023

S	M	T	W	T	F	S	S	M	T	W	T	F	S
			1	2	3	4	5				1	2	3
6	7	8	9	10	11	12		8	9	10	11	12	13
13	14	15	16	17	18	19		15	16	17	18	19	20
20	21	22	23	24	25	26		22	23	24	25	26	27
27	28	29	30	31				29	30	31			

3

4

5

6

7

8

9

Labor Day

10

11

12

13

14

15

16

Rosh Hashanah Begins

17

18

19

20

21

22

23

Rosh Hashanah Ends

Autumn Begins

24

25

26

27

28

29

30

Yom Kippur Begins

Yom Kippur Ends



GREAT LAKES DREDGE & DOCK COMPANY, LLC

IF INCIDENT & INJURY-FREE

SEPTEMBER 2023



OCTOBER

2023

SUNDAY	MONDAY	TUESDAY	WEDNESDAY	THURSDAY	FRIDAY	SATURDAY
1	2	3	4	5	6	7
8	9 <i>Columbus Day Indigenous Peoples' Day</i>	10	11	12	13	14
15	16	17	18	19	20	21
22	23	24	25	26	27	28
29	30	31 <i>Halloween</i>	1	2	3	4

Main: Dredge 55 maintenance dredging in Buttermilk Channel, New York Harbor. (Photo: Pablo Barrera)

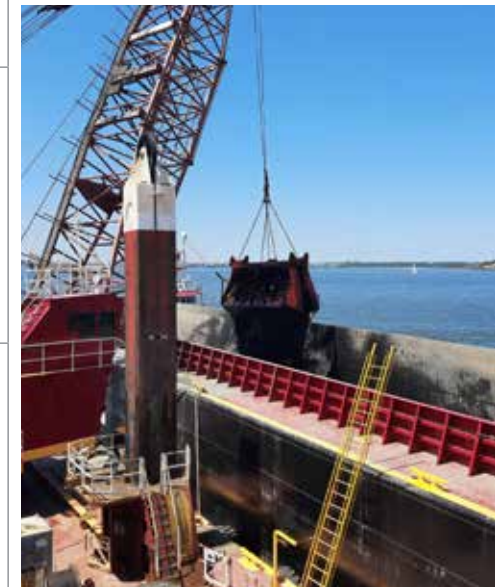
Inset: Dredged material removed from New York Harbor was placed at the Historic Area Remediation Site (HARS), an environmentally beneficial use of this resource.

SEPTEMBER 2023

S	M	T	W	T	F	S
					1	2
3	4	5	6	7	8	9
10	11	12	13	14	15	16
17	18	19	20	21	22	23
24	25	26	27	28	29	30

NOVEMBER 2023

S	M	T	W	T	F	S
						1
2	3	4	5	6	7	8
9	10	11	12	13	14	15
16	17	18	19	20	21	22
23	24	25	26	27	28	29
30						



GREAT LAKES DREDGE & DOCK COMPANY, LLC

IF INCIDENT & INJURY-FREE



NOVEMBER

2023

SUNDAY	MONDAY	TUESDAY	WEDNESDAY	THURSDAY	FRIDAY	SATURDAY
29	30	31	1 <i>All Saints' Day</i>	2 <i>All Souls' Day</i>	3	4
5 <i>Daylight Saving Time Ends</i>	6	7	8	9	10	11 <i>Veterans Day</i>
12	13	14	15	16	17	18
19	20	21	22	23 <i>Thanksgiving</i>	24	25
26	27	28	29	30	1	2

Main: Completed area of the Caminada Headland Back Barrier Marsh Creation project for the Louisiana Coastal Protection and Restoration Authority. This project created 875 acres of marsh on the inland side of Fourchon Beach, Louisiana between Port Fourchon and Grand Isle which helps to reinforce Louisiana barrier islands and protect against coastal erosion. (Photo: Patrick M. Quigley)

Inset: Cutter Suction Dredge Alaska dredging suitable marsh fill material from designated offshore borrow areas to create an eight-mile-long stretch of marsh. (Photo: Patrick M. Quigley)

OCTOBER 2023

S	M	T	W	T	F	S
1	2	3	4	5	6	7
8	9	10	11	12	13	14
15	16	17	18	19	20	21
22	23	24	25	26	27	28
29	30	31				

DECEMBER 2023

S	M	T	W	T	F	S
						1 2
3	4	5	6	7	8	9
10	11	12	13	14	15	16
17	18	19	20	21	22	23
24	25	26	27	28	29	30
31						



GREAT LAKES DREDGE & DOCK COMPANY, LLC

IF INCIDENT & INJURY-FREE



DECEMBER

2023

SUNDAY	MONDAY	TUESDAY	WEDNESDAY	THURSDAY	FRIDAY	SATURDAY
26	27	28	29	30	1	2
3	4	5	6	7	8	9
10	11	12	13	14 <i>Pearl Harbor Day Hanukkah Begins</i>	15	16
17	18	19	20	21	22 <i>Hanukkah Ends</i>	23
24	25	26	27	28	29	30
31 <i>Christmas Eve</i>	1 <i>Christmas Day</i>	2 <i>Kwanzaa Begins Boxing Day</i>	3	4	5	6

Main: Dredge Ellis Island. (Photo: Ed O'Dowd)

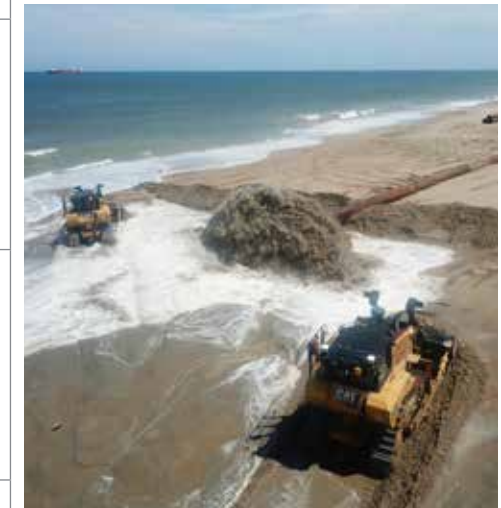
Inset: Avon Village beach nourishment with Trailing Suction Hopper Dredge Ellis Island offshore. (Photo: Ed O'Dowd)

NOVEMBER 2023

S	M	T	W	T	F	S
			1	2	3	4
5	6	7	8	9	10	11
12	13	14	15	16	17	18
19	20	21	22	23	24	25
26	27	28	29	30		

JANUARY 2024

S	M	T	W	T	F	S
			1	2	3	4
5	6	7	8	9	10	11
12	13	14	15	16	17	18
19	20	21	22	23	24	25
26	27	28	29	30	31	



GREAT LAKES DREDGE & DOCK COMPANY, LLC

IF INCIDENT & INJURY-FREE



JANUARY

2024

SUNDAY

MONDAY

TUESDAY

WEDNESDAY

THURSDAY

FRIDAY

SATURDAY

31

1

New Year's Day
Kwanzaa Ends

2

3

4

5

6

Main: The Dredge Liberty Island offshore pumping for the Dare County beach nourishment project in the Outer Banks, North Carolina. (Photo: Ed O'Dowd)

Inset: Sunset at Thimble Shoal East Deepening Project in Virginia. This project for the Virginia Port Authority includes a portion of the dredged material used beneficially for beach nourishment at Ocean View beach in Norfolk and the Ocean Park area in Virginia Beach. (Photo: Josh Harris)

7

8

9

10

11

12

13

DECEMBER 2023

FEBRUARY 2024

S M T W T F S

S M T W T F S

1 2
3 4 5 6 7 8 9
10 11 12 13 14 15 16
17 18 19 20 21 22 23
24 25 26 27 28 29 30
31

1 2 3
4 5 6 7 8 9 10
11 12 13 14 15 16 17
18 19 20 21 22 23 24
25 26 27 28 29

14

15

Martin Luther King Jr. Day

16

17

18

19

20

21

22

23

24

25

26

27



28

29

30

31

1

2

3



GREAT LAKES DREDGE & DOCK COMPANY, LLC

IF INCIDENT & INJURY-FREE

CUTTER SUCTION DREDGES



TEXAS

30 in (762 mm) Discharge Diameter | 15,771 hp (11,765 kW) Total Installed Power



CAROLINA

30 in (762 mm) Discharge Diameter | 15,325 hp (11,432 kW) Total Installed Power



OHIO

30 in (762 mm) Discharge Diameter | 15,670 hp (11,690 kW) Total Installed Power



ILLINOIS

30 in (762 mm) Discharge Diameter | 11,300 hp (8,430 kW) Total Installed Power



ALASKA

30 in (762 mm) Discharge Diameter | 11,200 hp (8,355 kW) Total Installed Power

TRAILING SUCTION HOPPER DREDGES

ELLIS ISLAND

14,800 yd³ (11,315 m³) Capacity | 28,625 hp (21,346 kW) Total Installed Power
Bottom Dump/Pump-Out Disposal

DODGE ISLAND

3,600 yd³ (2,752 m³) Capacity | 10,695 hp (7,978 kW) Total Installed Power
Split-Hull Dump/Pump-Out Disposal

PADRE ISLAND

3,600 yd³ (2,752 m³) Capacity | 9,895 hp (7,382 kW) Total Installed Power
Split-Hull Dump/Pump-Out Disposal

LIBERTY ISLAND

6,540 yd³ (5,000 m³) Capacity | 15,566 hp (11,612 kW) Total Installed Power
Bottom Dump / Pump-Out Disposal



TERRAPIN ISLAND

6,272 yd³ (4,795 m³) Capacity | 16,850 hp (12,570 kW) Total Installed Power
Split-Hull Dump/Pump-Out Disposal



GALVESTON ISLAND

6,500 cubic yd Trailing Suction Hopper Dredge
(Delivery Q2 2023)



MECHANICAL DREDGES

NEW YORK

Up to 25 yd³ (19 m³) Bucket Capacity | 3,818 hp (2,848 kW) Total Installed Power



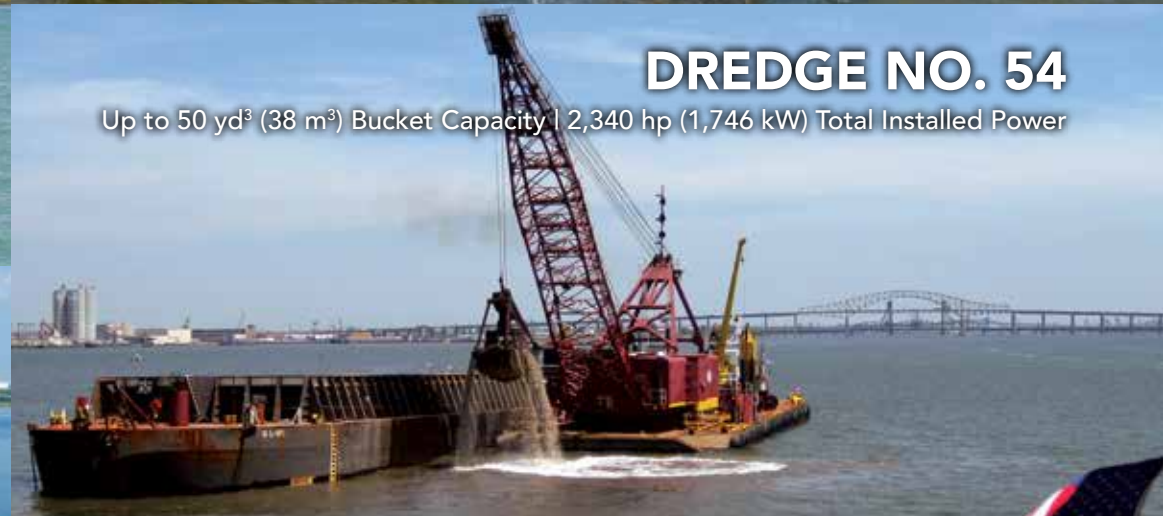
DREDGE NO. 53

Up to 40 yd³ (30 m³) Bucket Capacity | 2,250 hp (1,679 kW) Total Installed Power



DREDGE NO. 54

Up to 50 yd³ (38 m³) Bucket Capacity | 2,340 hp (1,746 kW) Total Installed Power



DREDGE NO. 58

Up to 50 yd³ (38 m³) Bucket Capacity | 3,000 hp (2,237 kW) Total Installed Power



DREDGE NO. 55

Up to 40 yd³ (31 m³) Bucket Capacity | 1,745 hp (1,302 kW) Total Installed Power



SUPPORT EQUIPMENT



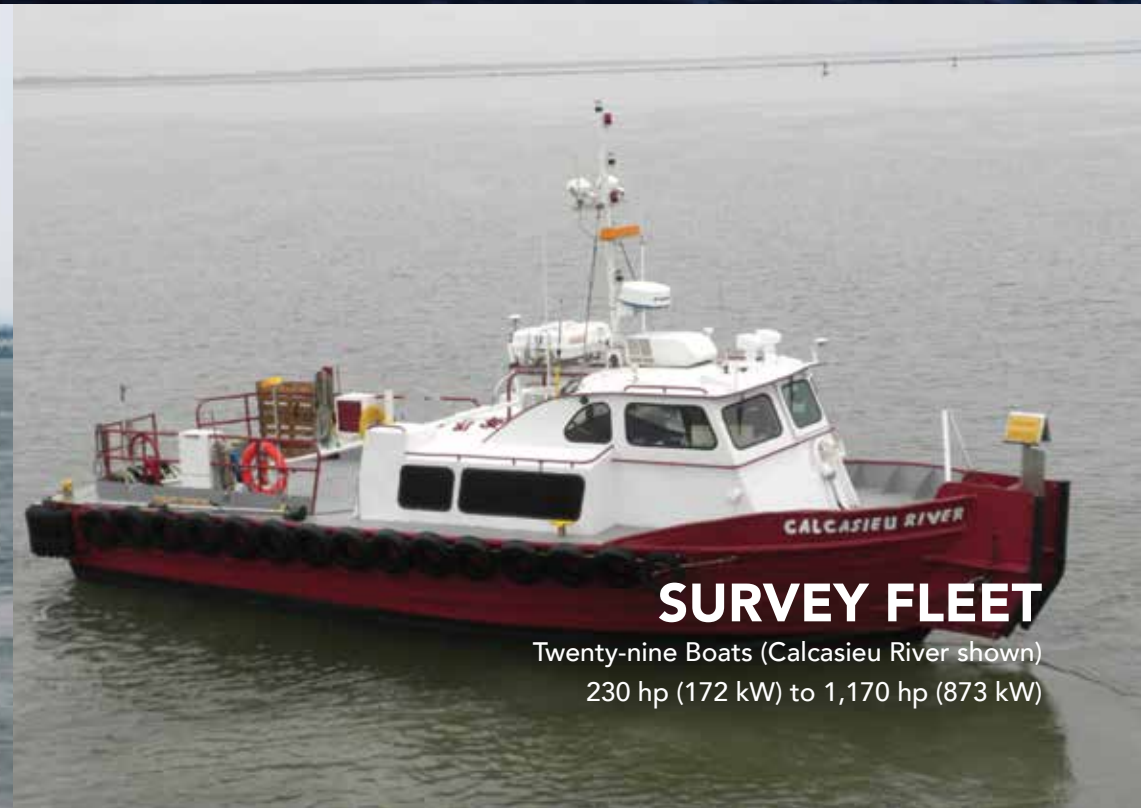
MULTICATS

Cape Hatteras and Cape Canaveral



TUG FLEET

Six Tugboats (McCormack Boys shown)
800 hp (597 kW) to 3,000 hp (2,238 kW)



SURVEY FLEET

Twenty-nine Boats (Calcasieu River shown)
230 hp (172 kW) to 1,170 hp (873 kW)

AUXILIARY FLEET



DRILLBOAT APACHE

Three 90 ft (27 m) Towers | Hydraulic Percussion Drills; Emulsion or Stick Explosives



MATERIAL BARGE FLEET

16 Material Transport Barges | 3,000 to 8,900 yd³ (2,295 to 6,820 m³) Size Range
Hopper & Split-Hull Configuration



UNLOADER NO. 2

24 in (610 mm) Discharge Diameter | 6,800 hp (5,073 kW) Total Installed Power



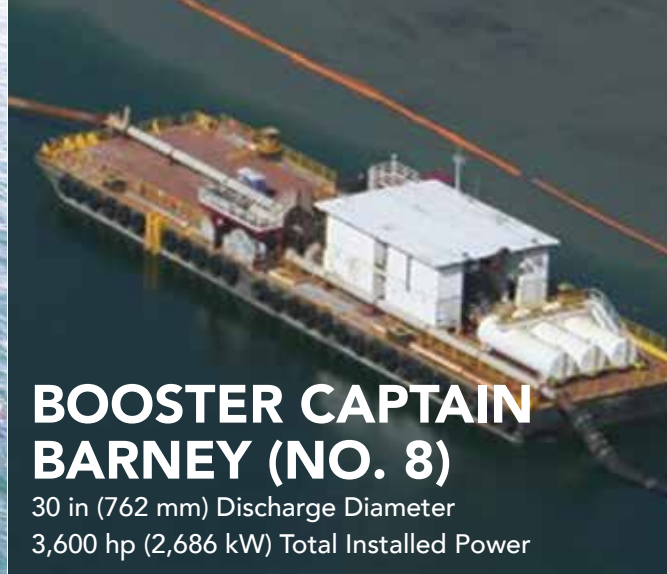
SPIDER BARGE 175

30 in (762 mm) Discharge Diameter | Three/Side Six-Arm Arrangement



BOOSTER JACK (NO. 1)

30 in (762 mm) Discharge Diameter
3,600 hp (2,686 kW) Total Installed Power



BOOSTER CAPTAIN BARNEY (NO. 8)

30 in (762 mm) Discharge Diameter
3,600 hp (2,686 kW) Total Installed Power



BOOSTER ERIN (NO. 5)

30 in (762 mm) Discharge Diameter
3,600 hp (2,686 kW) Total Installed Power



BOOSTER JESSIE (NO. 2)

30 in (762 mm) Discharge Diameter
7,200 hp (5,371 kW) Total Installed Power



BOOSTER BUSTER (NO. 6)

30 in (762 mm) Discharge Diameter
14,400 hp (10,742 kW) Total Installed Power



BOOSTER TEXAS JR. (NO. 7)

30 in (762 mm) Discharge Diameter
3,900 hp (2,909 kW) Total Installed Power



BOOSTER REGGIE (NO. 4)

30 in (762 mm) Discharge Diameter | 3600 hp (2,686 kW) Total Installed Power



BOOSTER NO. 9

30 in (762 mm) Discharge Diameter | 3,600 hp
(2,686 kW) Total Installed Power

RIVERS & LAKES DREDGES

LP

Discharge Diameter 22 in



IOWA

Discharge Diameter 24 in



SANDPIPER

Discharge Diameter 20 in



PEOPLE



GLDD Southeast Region team members at the Ronald McDonald House in Jacksonville, Florida where they cooked a hot meal with dessert for children and families staying in the home.



Safety Leadership Team members Kasey Gallegos and Stephanie Espinoza visit the New Jersey Wind Port Project.



Nisha Patel-Abraham at the Houston Food Bank. (July 2022)



GLDD Southeast Region team members from the Nags Head and Avon Buxton Project visit to the North Carolina Aquarium at Roanoke Island.



Gulf Region and Houston headquarters team members gather with family and friends at Sylvan Beach, Laporte, Texas for the spring 2022 beach cleanup. (April 2022)



Gulf Region and Houston headquarters team members at the Houston Food Bank. (March 2022)



Anna Johnson, Rachael Violassi, Samantha Angell



Isis Quintana showing some of the school supplies the Southeast Region collected for their back to school drive in collaboration with the Boys and Girls Club in Jacksonville, Florida. (August 2022)



Gulf Region and Houston headquarters team members, their families, and friends, spent the day picking up debris at Galveston Beach, Texas for the fall beach cleanup. (September 2022)

SAFETY



Dredge Ohio Safety Week | Performing a lift of UWP motor post JSA - from Derrick 72 to Dredge Ohio



Boston Deepening Project Safety Week | Life ring toss training on the Dredge 55



Hutchinson Island Safety Week | Lynn Nietfeld and Ed O'Dowd participating in Markus Man Overboard (MOB) training



Booster Buster Crew Safety Week | Rigging training completed

PROJECTS



Cutter Suction Dredge Carolina
Deepening Houston Ship Channel



Trailing Suction Hopper Dredges Ellis Island and Liberty Island beach operations in Buxton Beach, North Carolina



Dredge 58
Dredging Charleston Lower Harbor, South Carolina
Pilot/Photographer: Zachariah Martin & Malcolm Carvajal Rodriguez



Cutter Suction Dredge Illinois
Dredging Fire Island Inlet

ENVIRONMENTAL SOCIAL & GOVERNANCE

GLDD practices effective environmental, safety, social and governance processes in everything we do. Our business is focused on ensuring that our nation's shorelines are protected and potential risks associated with storms and sea change are mitigated.

Our people seek and develop technical innovations so that our work can be completed efficiently and responsibly, and we are committed to executing all projects with robust environmental and safety standards. To learn more about our ESG initiatives, visit gldd.com/ESG.

2023

JANUARY 2023							FEBRUARY 2023							MARCH 2023							APRIL 2023							MAY 2023							JUNE 2023										
S	M	T	W	T	F	S	S	M	T	W	T	F	S	S	M	T	W	T	F	S	S	M	T	W	T	F	S	S	M	T	W	T	F	S											
1	2	3	4	5	6	7				1	2	3	4							1								1	2	3	4	5	6					1	2	3					
8	9	10	11	12	13	14	5	6	7	8	9	10	11	5	6	7	8	9	10	11	2	3	4	5	6	7	8	7	8	9	10	11	12	13	4	5	6	7	8	9	10				
15	16	17	18	19	20	21	12	13	14	15	16	17	18	12	13	14	15	16	17	18	9	10	11	12	13	14	15	14	15	16	17	18	19	20	11	12	13	14	15	16	17				
22	23	24	25	26	27	28	19	20	21	22	23	24	25	19	20	21	22	23	24	25	16	17	18	19	20	21	22	21	22	23	24	25	26	27	18	19	20	21	22	23	24				
29	30	31					26	27	28					26	27	28	29	30	31		23	24	25	26	27	28	29	28	29	30	31									25	26	27	28	29	30
																					30																								
JULY 2023							AUGUST 2023							SEPTEMBER 2023							OCTOBER 2023							NOVEMBER 2023							DECEMBER 2023										
S	M	T	W	T	F	S	S	M	T	W	T	F	S	S	M	T	W	T	F	S	S	M	T	W	T	F	S	S	M	T	W	T	F	S	S	M	T	W	T	F	S				
						1			1	2	3	4	5							1	2	1	2	3	4	5	6	7			1	2	3	4						1	2				
2	3	4	5	6	7	8	6	7	8	9	10	11	12	3	4	5	6	7	8	9	8	9	10	11	12	13	14	5	6	7	8	9	10	11	3	4	5	6	7	8	9				
9	10	11	12	13	14	15	13	14	15	16	17	18	19	10	11	12	13	14	15	16	15	16	17	18	19	20	21	12	13	14	15	16	17	18	10	11	12	13	14	15	16				
16	17	18	19	20	21	22	20	21	22	23	24	25	26	17	18	19	20	21	22	23	22	23	24	25	26	27	28	19	20	21	22	23	24	25	17	18	19	20	21	22	23				
23	24	25	26	27	28	29	27	28	29	30	31			24	25	26	27	28	29	30	29	30	31					26	27	28	29	30													
30	31																																												

2024

JANUARY 2024							FEBRUARY 2024							MARCH 2024							APRIL 2024							MAY 2024							JUNE 2024																																																																																																																																																																																																																																																																																																																																																																																																																																																																																																																																																																																																																																																																																																																																																																																																																																																																																																																																																																																																																																																																																																																
S	M	T	W	T	F	S	S	M	T	W	T	F	S	S	M	T	W	T	F	S	S	M	T	W	T	F	S	S	M	T	W	T	F	S																																																																																																																																																																																																																																																																																																																																																																																																																																																																																																																																																																																																																																																																																																																																																																																																																																																																																																																																																																																																																																																																																																																	
	1	2	3	4	5	6					1	2	3						1	2		1	2	3	4	5	6							1																																																																																																																																																																																																																																																																																																																																																																																																																																																																																																																																																																																																																																																																																																																																																																																																																																																																																																																																																																																																																																																																																																																	
7	8	9	10	11	12	13	4	5	6	7	8	9	10	3	4	5	6	7	8	9	7	8	9	10	11	12	13	5	6	7	8	9	10	11	2	3	4	5	6	7	8																																																																																																																																																																																																																																																																																																																																																																																																																																																																																																																																																																																																																																																																																																																																																																																																																																																																																																																																																																																																																																																																																																										
14	15	16	17	18	19	20	11	12	13	14	15	16	17	10	11	12	13	14	15	16	14	15	16	17	18	19	20	12	13	14	15	16	17	18	9	10	11	12	13	14	15																																																																																																																																																																																																																																																																																																																																																																																																																																																																																																																																																																																																																																																																																																																																																																																																																																																																																																																																																																																																																																																																																																										
21	22	23	24	25	26	27	18	19	20	21	22	23	24	17	18	19	20	21	22	23	21	22	23	24	25	26	27	19	20	21	22	23	24	25	16	17	18	19	20	21	22																																																																																																																																																																																																																																																																																																																																																																																																																																																																																																																																																																																																																																																																																																																																																																																																																																																																																																																																																																																																																																																																																																										
28	29	30	31				25	26	27	28	29			24	25	26	27	28	29	30	28	29	30					26	27	28	29	30	31																																																																																																																																																																																																																																																																																																																																																																																																																																																																																																																																																																																																																																																																																																																																																																																																																																																																																																																																																																																																																																																																																																																		

2025

JANUARY 2025							FEBRUARY 2025							MARCH 2025							APRIL 2025							MAY 2025							JUNE 2025							
S	M	T	W	T	F	S	S	M	T	W	T	F	S	S	M	T	W	T	F	S	S	M	T	W	T	F	S	S	M	T	W	T	F	S								
1 2 3 4						1						1						1 2 3 4 5						1 2 3						1 2 3 4 5 6 7												
5	6	7	8	9	10	11	2	3	4	5	6	7	8	2	3	4	5	6	7	8	6	7	8	9	10	11	12	4	5	6	7	8	9	10	8	9	10	11	12	13	14	
12	13	14	15	16	17	18	9	10	11	12	13	14	15	9	10	11	12	13	14	15	13	14	15	16	17	18	19	11	12	13	14	15	16	17	15	16	17	18	19	20	21	
19	20	21	22	23	24	25	16	17	18	19	20	21	22	16	17	18	19	20	21	22	20	21	22	23	24	25	26	18	19	20	21	22	23	24	22	23	24	25	26	27	28	
26	27	28	29	30	31		23	24	25	26	27	28		23	24	25	26	27	28	29	27	28	29	30				25	26	27	28	29	30	31	29	30						
							30 31																																			
JULY 2025							AUGUST 2025							SEPTEMBER 2025							OCTOBER 2025							NOVEMBER 2025							DECEMBER 2025							
S	M	T	W	T	F	S	S	M	T	W	T	F	S	S	M	T	W	T	F	S	S	M	T	W	T	F	S	S	M	T	W	T	F	S	S	M	T	W	T	F	S	
1 2 3 4 5						1 2						1 2 3 4 5 6						1 2 3 4						1						1 2 3 4 5 6												
6	7	8	9	10	11	12	3	4	5	6	7	8	9	7	8	9	10	11	12	13	5	6	7	8	9	10	11	2	3	4	5	6	7	8	7	8	9	10	11	12	13	
13	14	15	16	17	18	19	10	11	12	13	14	15	16	14	15	16	17	18	19	20	12	13	14	15	16	17	18	9	10	11	12	13	14	15	14	15	16	17	18	19	20	
20	21	22	23	24	25	26	17	18	19	20	21	22	23	21	22	23	24	25	26	27	19	20	21	22	23	24	25	16	17	18	19	20	21	22	21	22	23	24	25	26	27	
27	28	29	30	31			24	25	26	27	28	29	30	28	29	30					26	27	28	29	30	31		23	24	25	26	27	28	29	28	29	30	31				
							31																					30														

Anatomy of a Beach Nourishment in Progress

An annotated overview of the beach nourishment at Sea Isle City, NJ as the Dredge *Liberty Island* pumps on the shore at 83rd Street.

21 July, 2020 at 4:00pm
photo: Emily Iseley



Scan this QR code to see the GLDD 2023 calendar as a flip-book online.



**GREAT LAKES
DREDGE & DOCK
COMPANY, LLC**

EST. 1890 • WWW.GLDD.COM • NASDAQ: GLDD

COMMITTED TO CREATING AN INCIDENT & INJURY FREE WORKING ENVIRONMENT (IIF). REGISTERED TO DO BUSINESS WORLDWIDE.
AN EQUAL OPPORTUNITY EMPLOYER.

REGIONAL DREDGING OFFICES

NORTHEAST REGION

2747 Richmond Terrace
Staten Island, NY 10303
718.981.2700 | 800.792.0085 | NortheastRegion@gldd.com

SOUTHEAST REGION

10151 Deerwood Park Blvd. Building 300, Suite 115
Jacksonville, FL 32256
904.834.5234 | SoutheastRegion@gldd.com

GULF REGION

9811 Katy Freeway, Suite 1200
Houston, TX 77024
346.271.7701 | GulfRegion@gldd.com

MIDDLE EAST

MJ Tower, Office No. 32, 1st Floor Building No. 870,
Road No. 3618, Block 436 Seef District, Manama Kingdom of Bahrain
011.973.17.471.929 | MEinfo@gldd.com

BUSINESS OPERATIONS AND SUPPORT

1 Parkview Plaza, Suite 800
Oakbrook Terrace, IL 60181
630.574.3000 | info@gldd.com

YARD LOCATIONS

Staten Island, NY
Norfolk, VA
Morgan City, LA
Chickasaw, AL
Cape Girardeau, MO
Little Rock, AR

HEADQUARTERS

9811 Katy Freeway, Suite 1200
Houston, TX 77024
346.359.1010 | info@gldd.com

CAREERS

careers@gldd.com
www.gldd.com/careers

INVESTOR RELATIONS

Tina Baginskis
630.574.3024

COMPLIANCE LINE

1.888.579.1670
gldd.mycompliancereport.com

Front Cover Photo: Dredge 55 maintenance dredging in the Buttermilk Channel in New York Harbor. (Photo: Pablo Barrera)



GREAT LAKES DREDGE & DOCK COMPANY

www.gldd.com



A rendering of GLDD's new subsea rock installation vessel for the offshore wind market.
(Delivery by Q4 2024).